



[Go to Product page](#)

Datasheet for ABIN6259109  
**anti-PAQR7 antibody (C-Term)**

2 Images

Overview

Quantity:	100 µL
Target:	PAQR7
Binding Specificity:	C-Term
Reactivity:	Human, Mouse
Host:	Rabbit
Clonality:	Polyclonal
Conjugate:	This PAQR7 antibody is un-conjugated
Application:	ELISA, Western Blotting (WB), Immunofluorescence (IF), Immunohistochemistry (IHC), Immunocytochemistry (ICC)

Product Details

Immunogen:	A synthesized peptide derived from human MPRA, corresponding to a region within C-terminal amino acids.
Isotype:	IgG
Specificity:	MPRA Antibody detects endogenous levels of total MPRA.
Predicted Reactivity:	Pig,Bovine,Horse,Sheep
Purification:	The antiserum was purified by peptide affinity chromatography using SulfoLink™ Coupling Resin (Thermo Fisher Scientific).

Target Details

Target:	PAQR7
---------	-------

## Target Details

---

Alternative Name:	PAQR7 ( <a href="#">PAQR7 Products</a> )
Background:	Description: Plasma membrane progesterone (P4) receptor coupled to G proteins (PubMed:23763432). Seems to act through a G(i) mediated pathway (PubMed:23763432). May be involved in oocyte maturation (PubMed:12601167). Involved in neurosteroid inhibition of apoptosis (PubMed:23161870). Also binds dehydroepiandrosterone (DHEA), pregnanolone, pregnenolone and allopregnanolone (PubMed:23161870). Gene: PAQR7
Molecular Weight:	40 kDa
Gene ID:	164091
UniProt:	<a href="#">Q86WK9</a>

## Application Details

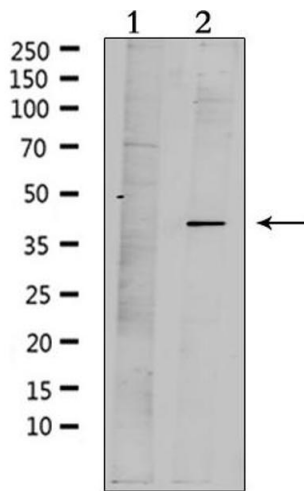
---

Application Notes:	WB 1:500-1:1000, IF/ICC 1:100-1:500, IHC 1:50-1:200, ELISA(peptide) 1:20000-1:40000
Restrictions:	For Research Use only

## Handling

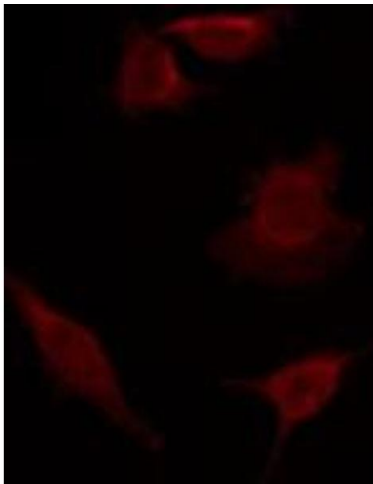
---

Format:	Liquid
Concentration:	1 mg/mL
Buffer:	Rabbit IgG in phosphate buffered saline , pH 7.4, 150 mM NaCl, 0.02 % sodium azide and 50 % glycerol.
Preservative:	Sodium azide
Precaution of Use:	This product contains Sodium azide: a POISONOUS AND HAZARDOUS SUBSTANCE which should be handled by trained staff only.
Storage:	-20 °C
Storage Comment:	Store at -20 °C. Stable for 12 months from date of receipt.
Expiry Date:	12 months



### Western Blotting

**Image 1.** Western blot analysis of extracts from mouse brain, using MPRA Antibody. Lane 1 was treated with the antigen-specific peptide.



### Immunofluorescence (fixed cells)

**Image 2.** ABIN6276049 staining 293 by IF/ICC. The sample were fixed with PFA and permeabilized in 0.1% Triton X-100, then blocked in 10% serum for 45 minutes at 25°C. The primary antibody was diluted at 1/200 and incubated with the sample for 1 hour at 37°C. An Alexa Fluor 594 conjugated goat anti-rabbit IgG (H+L) Ab, diluted at 1/600, was used as the secondary antibody.