

Datasheet for ABIN6259125  
**anti-NFE2L3 antibody (C-Term)**[Go to Product page](#)

## 2 Images

## Overview

|                      |                                                                                  |
|----------------------|----------------------------------------------------------------------------------|
| Quantity:            | 100 µL                                                                           |
| Target:              | NFE2L3                                                                           |
| Binding Specificity: | C-Term                                                                           |
| Reactivity:          | Human                                                                            |
| Host:                | Rabbit                                                                           |
| Clonality:           | Polyclonal                                                                       |
| Conjugate:           | This NFE2L3 antibody is un-conjugated                                            |
| Application:         | Western Blotting (WB), ELISA, Immunocytochemistry (ICC), Immunofluorescence (IF) |

## Product Details

|                       |                                                                                                                           |
|-----------------------|---------------------------------------------------------------------------------------------------------------------------|
| Immunogen:            | A synthesized peptide derived from human NFE2L3, corresponding to a region within C-terminal amino acids.                 |
| Isotype:              | IgG                                                                                                                       |
| Specificity:          | NFE2L3 Antibody detects endogenous levels of total NFE2L3.                                                                |
| Predicted Reactivity: | Pig,Bovine,Horse,Sheep,Rabbit,Dog,Xenopus                                                                                 |
| Purification:         | The antiserum was purified by peptide affinity chromatography using SulfoLink™ Coupling Resin (Thermo Fisher Scientific). |

## Target Details

|         |        |
|---------|--------|
| Target: | NFE2L3 |
|---------|--------|

## Target Details

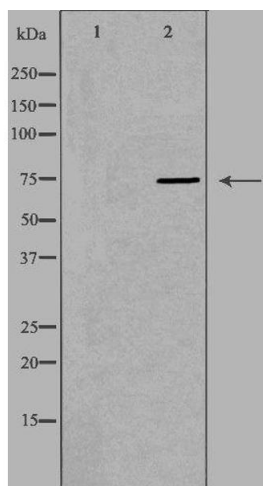
|                   |                                                                                    |
|-------------------|------------------------------------------------------------------------------------|
| Alternative Name: | NFE2L3 ( <a href="#">NFE2L3 Products</a> )                                         |
| Background:       | Description: Activates erythroid-specific, globin gene expression.<br>Gene: NFE2L3 |
| Molecular Weight: | 75 kDa                                                                             |
| Gene ID:          | 9603                                                                               |
| UniProt:          | <a href="#">Q9Y4A8</a>                                                             |

## Application Details

|                    |                                                                     |
|--------------------|---------------------------------------------------------------------|
| Application Notes: | WB 1:500-1:1000, IF/ICC 1:100-1:500, ELISA(peptide) 1:20000-1:40000 |
| Restrictions:      | For Research Use only                                               |

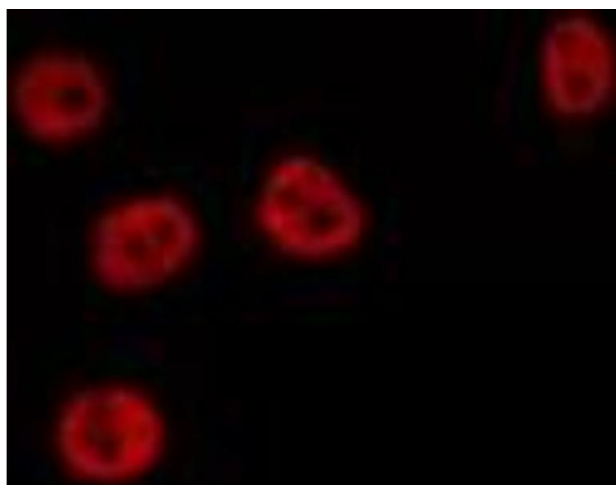
## Handling

|                    |                                                                                                                        |
|--------------------|------------------------------------------------------------------------------------------------------------------------|
| Format:            | Liquid                                                                                                                 |
| Concentration:     | 1 mg/mL                                                                                                                |
| Buffer:            | Rabbit IgG in phosphate buffered saline , pH 7.4, 150 mM NaCl, 0.02 % sodium azide and 50 % glycerol.                  |
| Preservative:      | Sodium azide                                                                                                           |
| Precaution of Use: | This product contains Sodium azide: a POISONOUS AND HAZARDOUS SUBSTANCE which should be handled by trained staff only. |
| Storage:           | -20 °C                                                                                                                 |
| Storage Comment:   | Store at -20 °C. Stable for 12 months from date of receipt.                                                            |
| Expiry Date:       | 12 months                                                                                                              |



### Western Blotting

**Image 1.** Western blot analysis of extracts from HeLa cells, using NFE2L3 antibody. The lane on the left is treated with the antigen-specific peptide.



### Immunofluorescence (fixed cells)

**Image 2.** ABIN6275802 staining HepG2 by IF/ICC. The sample were fixed with PFA and permeabilized in 0.1% Triton X-100, then blocked in 10% serum for 45 minutes at 25°C. The primary antibody was diluted at 1/200 and incubated with the sample for 1 hour at 37°C. An Alexa Fluor 594 conjugated goat anti-rabbit IgG (H+L) Ab, diluted at 1/600, was used as the secondary antibody.