

Datasheet for ABIN6259147  
**anti-PDE4C antibody (Internal Region)**

## 3 Images

[Go to Product page](#)

## Overview

Quantity:	100 µL
Target:	PDE4C
Binding Specificity:	Internal Region
Reactivity:	Human, Mouse, Rat
Host:	Rabbit
Clonality:	Polyclonal
Conjugate:	This PDE4C antibody is un-conjugated
Application:	Western Blotting (WB), ELISA, Immunofluorescence (IF), Immunohistochemistry (IHC), Immunocytochemistry (ICC)

## Product Details

Immunogen:	A synthesized peptide derived from human PDE4C, corresponding to a region within the internal amino acids.
Isotype:	IgG
Specificity:	PDE4C Antibody detects endogenous levels of total PDE4C.
Predicted Reactivity:	Pig,Bovine,Sheep,Dog
Purification:	The antiserum was purified by peptide affinity chromatography using SulfoLink™ Coupling Resin (Thermo Fisher Scientific).

## Target Details

Target:	PDE4C
---------	-------

## Target Details

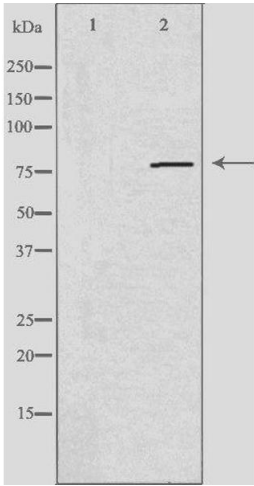
Alternative Name:	PDE4C ( <a href="#">PDE4C Products</a> )
Background:	Description: Hydrolyzes the second messenger cAMP, which is a key regulator of many important physiological processes. Gene: PDE4C
Molecular Weight:	80 kDa
Gene ID:	5143
UniProt:	<a href="#">Q08493</a>
Pathways:	<a href="#">Negative Regulation of Hormone Secretion</a> , <a href="#">cAMP Metabolic Process</a>

## Application Details

Application Notes:	WB 1:500-1:1000, IF/ICC 1:100-1:500, IHC 1:50-1:200, ELISA(peptide) 1:20000-1:40000
Restrictions:	For Research Use only

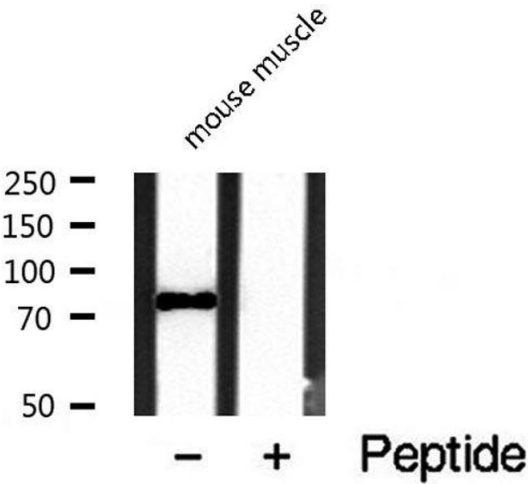
## Handling

Format:	Liquid
Concentration:	1 mg/mL
Buffer:	Rabbit IgG in phosphate buffered saline , pH 7.4, 150 mM NaCl, 0.02 % sodium azide and 50 % glycerol.
Preservative:	Sodium azide
Precaution of Use:	This product contains Sodium azide: a POISONOUS AND HAZARDOUS SUBSTANCE which should be handled by trained staff only.
Storage:	-20 °C
Storage Comment:	Store at -20 °C. Stable for 12 months from date of receipt.
Expiry Date:	12 months



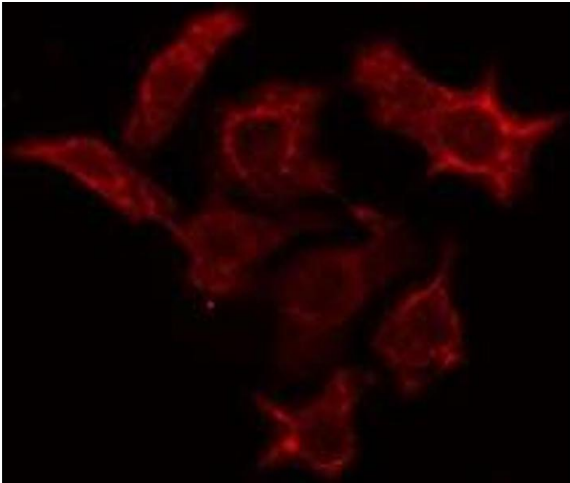
Western Blotting

**Image 1.** Western blot analysis of extracts from A549 cell, using PDE4C antibody. The lane on the left is treated with the antigen-specific peptide.



Western Blotting

**Image 2.** Western blot analysis of PDE4C expression in mouse brain lysate



Immunofluorescence (fixed cells)

**Image 3.** ABIN6274943 staining A549 cells by IF/ICC. The sample were fixed with PFA and permeabilized in 0.1% Triton X-100, then blocked in 10% serum for 45 minutes at 25°C. The primary antibody was diluted at 1/200 and incubated with the sample for 1 hour at 37°C. An Alexa Fluor 594 conjugated goat anti-rabbit IgG (H+L) antibody (Cat.# S0006), diluted at 1/600, was used as secondary antibody