

Datasheet for ABIN6259170

**anti-RAB7L1 antibody (Internal Region)**[Go to Product page](#)**2** Images

## Overview

Quantity:	100 µL
Target:	RAB7L1
Binding Specificity:	Internal Region
Reactivity:	Human, Mouse, Rat
Host:	Rabbit
Clonality:	Polyclonal
Conjugate:	This RAB7L1 antibody is un-conjugated
Application:	Western Blotting (WB), ELISA, Immunofluorescence (IF), Immunocytochemistry (ICC)

## Product Details

Immunogen:	A synthesized peptide derived from human RAB7L1, corresponding to a region within the internal amino acids.
Isotype:	IgG
Specificity:	RAB7L1 Antibody detects endogenous levels of total RAB7L1.
Predicted Reactivity:	Pig,Bovine,Horse,Sheep,Rabbit,Dog,Xenopus
Purification:	The antiserum was purified by peptide affinity chromatography using SulfoLink™ Coupling Resin (Thermo Fisher Scientific).

## Target Details

Target:	RAB7L1
---------	--------

## Target Details

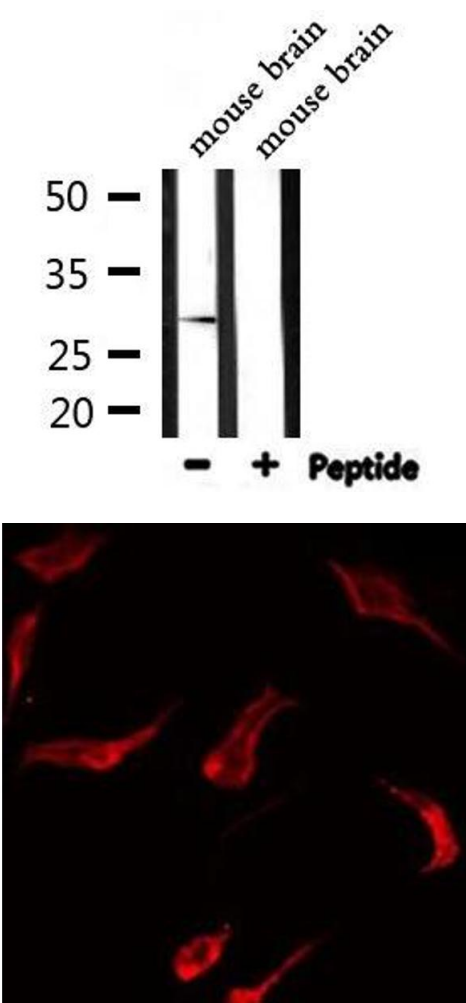
Alternative Name:	RAB29 ( <a href="#">RAB7L1 Products</a> )
Background:	<p>Description: Rab GTPase key regulator in vesicle trafficking. Essential for maintaining the integrity of the endosome-trans-Golgi network structure. Together with LRRK2, plays a role in the retrograde trafficking pathway for recycling proteins, such as mannose 6 phosphate receptor (M6PR), between lysosomes and the Golgi apparatus in a retromer-dependent manner. Regulates neuronal process morphology in the intact central nervous system (CNS). May play a role in the formation of typhoid toxin transport intermediates during Salmonella enterica serovar Typhi (S.Typhi) epithelial cell infection.</p> <p>Gene: RAB29</p>
Molecular Weight:	28 kDa
Gene ID:	8934
UniProt:	<a href="#">O14966</a>

## Application Details

Application Notes:	WB 1:500-1:1000, IF/ICC 1:100-1:500, ELISA(peptide) 1:20000-1:40000
Restrictions:	For Research Use only

## Handling

Format:	Liquid
Concentration:	1 mg/mL
Buffer:	Rabbit IgG in phosphate buffered saline , pH 7.4, 150 mM NaCl, 0.02 % sodium azide and 50 % glycerol.
Preservative:	Sodium azide
Precaution of Use:	This product contains Sodium azide: a POISONOUS AND HAZARDOUS SUBSTANCE which should be handled by trained staff only.
Storage:	-20 °C
Storage Comment:	Store at -20 °C. Stable for 12 months from date of receipt.
Expiry Date:	12 months



Western Blotting

**Image 1.** Western blot analysis of extracts from mouse brain, using RAB7L1 Antibody.

Immunofluorescence (fixed cells)

**Image 2.** ABIN6275473 staining HT29 by IF/ICC. The sample were fixed with PFA and permeabilized in 0.1% Triton X-100, then blocked in 10% serum for 45 minutes at 25°C. The primary antibody was diluted at 1/200 and incubated with the sample for 1 hour at 37°C. An Alexa Fluor 594 conjugated goat anti-rabbit IgG (H+L) Ab, diluted at 1/600, was used as the secondary antibody.