

Datasheet for ABIN6259181
anti-GTR2 antibody (Internal Region)[Go to Product page](#)

1 Image

Overview

| | |
|----------------------|--|
| Quantity: | 100 µL |
| Target: | GTR2 (RRAGC) |
| Binding Specificity: | Internal Region |
| Reactivity: | Human, Mouse, Rat |
| Host: | Rabbit |
| Clonality: | Polyclonal |
| Conjugate: | This GTR2 antibody is un-conjugated |
| Application: | Western Blotting (WB), ELISA, Immunofluorescence (IF), Immunocytochemistry (ICC) |

Product Details

| | |
|-----------------------|---|
| Immunogen: | A synthesized peptide derived from human RRAGC, corresponding to a region within the internal amino acids. |
| Isotype: | IgG |
| Specificity: | RRAGC Antibody detects endogenous levels of total RRAGC. |
| Predicted Reactivity: | Bovine,Horse,Sheep,Rabbit,Dog,Chicken,Xenopus |
| Purification: | The antiserum was purified by peptide affinity chromatography using SulfoLink™ Coupling Resin (Thermo Fisher Scientific). |

Target Details

| | |
|---------|--------------|
| Target: | GTR2 (RRAGC) |
|---------|--------------|

Target Details

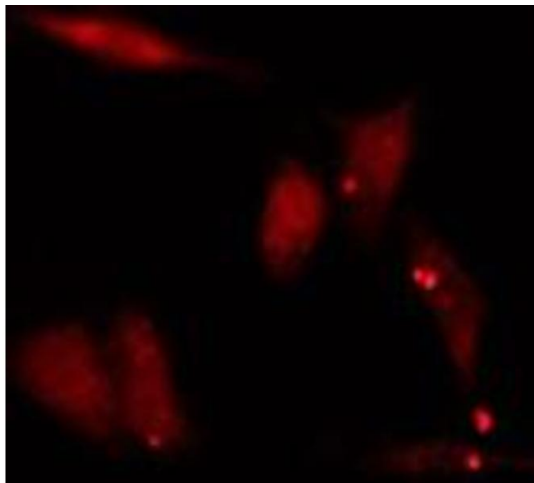
| | |
|-------------------|---|
| Alternative Name: | RRAGC (RRAGC Products) |
| Background: | <p>Description: Guanine nucleotide-binding protein forming heterodimeric Rag complexes required for the amino acid-induced relocalization of mTORC1 to the lysosomes and its subsequent activation by the GTPase RHEB. This is a crucial step in the activation of the TOR signaling cascade by amino acids.</p> <p>Gene: RRAGC</p> |
| Molecular Weight: | 44 kDa |
| Gene ID: | 64121 |
| UniProt: | Q9HB90 |
| Pathways: | Autophagy |

Application Details

| | |
|--------------------|---|
| Application Notes: | WB 1:500-1:1000, IF/ICC 1:100-1:500, ELISA(peptide) 1:20000-1:40000 |
| Restrictions: | For Research Use only |

Handling

| | |
|--------------------|--|
| Format: | Liquid |
| Concentration: | 1 mg/mL |
| Buffer: | Rabbit IgG in phosphate buffered saline , pH 7.4, 150 mM NaCl, 0.02 % sodium azide and 50 % glycerol. |
| Preservative: | Sodium azide |
| Precaution of Use: | This product contains Sodium azide: a POISONOUS AND HAZARDOUS SUBSTANCE which should be handled by trained staff only. |
| Storage: | -20 °C |
| Storage Comment: | Store at -20 °C. Stable for 12 months from date of receipt. |
| Expiry Date: | 12 months |



Immunofluorescence (fixed cells)

Image 1. ABIN6275458 staining HepG2 cells by IF/ICC. The sample were fixed with PFA and permeabilized in 0.1% Triton X-100, then blocked in 10% serum for 45 minutes at 25°C. The primary antibody was diluted at 1/200 and incubated with the sample for 1 hour at 37°C. An Alexa Fluor 594 conjugated goat anti-rabbit IgG (H+L) antibody (Cat.# S0006), diluted at 1/600, was used as secondary antibody.