

Datasheet for ABIN6259187
anti-SRSF3 antibody (C-Term)

2 Images

[Go to Product page](#)

Overview

Quantity:	100 µL
Target:	SRSF3
Binding Specificity:	C-Term
Reactivity:	Human, Mouse
Host:	Rabbit
Clonality:	Polyclonal
Conjugate:	This SRSF3 antibody is un-conjugated
Application:	Western Blotting (WB), ELISA, Immunofluorescence (IF), Immunocytochemistry (ICC)

Product Details

Immunogen:	A synthesized peptide derived from human SFRS3, corresponding to a region within C-terminal amino acids.
Isotype:	IgG
Specificity:	SFRS3 Antibody detects endogenous levels of total SFRS3.
Predicted Reactivity:	Pig,Bovine,Horse,Sheep,Rabbit,Dog,Chicken
Purification:	The antiserum was purified by peptide affinity chromatography using SulfoLink™ Coupling Resin (Thermo Fisher Scientific).

Target Details

Target:	SRSF3
---------	-------

Target Details

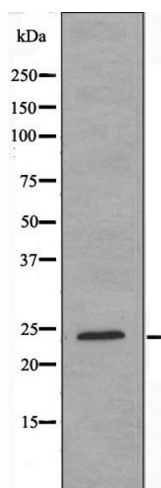
Alternative Name:	SRSF3 (SRSF3 Products)
Background:	<p>Description: Splicing factor that specifically promotes exon-inclusion during alternative splicing (PubMed:26876937). Interaction with YTHDC1, a RNA-binding protein that recognizes and binds N6-methyladenosine (m6A)-containing RNAs, promotes recruitment of SRSF3 to its mRNA-binding elements adjacent to m6A sites, leading to exon-inclusion during alternative splicing (PubMed:26876937). Also functions as export adapter involved in mRNA nuclear export such as of histone H2A (PubMed:11336712, PubMed:18364396). Binds mRNA which is thought to be transferred to the NXF1-NXT1 heterodimer for export (TAP/NXF1 pathway), enhances NXF1-NXT1 RNA-binding activity (PubMed:11336712, PubMed:18364396). RNA-binding is semi-sequence specific (PubMed:17036044).</p> <p>Gene: SRSF3</p>
Molecular Weight:	25 kDa
Gene ID:	6428
UniProt:	P84103

Application Details

Application Notes:	WB 1:500-1:1000, IF/ICC 1:100-1:500, ELISA(peptide) 1:20000-1:40000
Restrictions:	For Research Use only

Handling

Format:	Liquid
Concentration:	1 mg/mL
Buffer:	Rabbit IgG in phosphate buffered saline , pH 7.4, 150 mM NaCl, 0.02 % sodium azide and 50 % glycerol.
Preservative:	Sodium azide
Precaution of Use:	This product contains Sodium azide: a POISONOUS AND HAZARDOUS SUBSTANCE which should be handled by trained staff only.
Storage:	-20 °C
Storage Comment:	Store at -20 °C. Stable for 12 months from date of receipt.
Expiry Date:	12 months



Western Blotting

Image 1. Western blot analysis of extracts from HeLa cells using SFRS3 antibody.



Immunofluorescence (fixed cells)

Image 2. ABIN6274307 staining HeLa cells by IF/ICC. The sample were fixed with PFA and permeabilized in 0.1% Triton X-100, then blocked in 10% serum for 45 minutes at 25°C. The primary antibody was diluted at 1/200 and incubated with the sample for 1 hour at 37°C. An Alexa Fluor 594 conjugated goat anti-rabbit IgG (H+L) antibody (Cat.# S0006), diluted at 1/600, was used as secondary antibody.