



[Go to Product page](#)

Datasheet for ABIN6259198  
**anti-SSBP1 antibody (Internal Region)**

4 Images

Overview

Quantity:	100 µL
Target:	SSBP1
Binding Specificity:	Internal Region
Reactivity:	Human, Mouse, Rat
Host:	Rabbit
Clonality:	Polyclonal
Conjugate:	This SSBP1 antibody is un-conjugated
Application:	Western Blotting (WB), ELISA, Immunohistochemistry (IHC), Immunofluorescence (IF), Immunocytochemistry (ICC)

Product Details

Immunogen:	A synthesized peptide derived from human MtSSB, corresponding to a region within the internal amino acids.
Isotype:	IgG
Specificity:	MtSSB Antibody detects endogenous levels of total MtSSB.
Predicted Reactivity:	Pig,Zebrafish,Bovine,Horse,Sheep,Rabbit,Dog,Chicken,Xenopus
Purification:	The antiserum was purified by peptide affinity chromatography using SulfoLink™ Coupling Resin (Thermo Fisher Scientific).

Target Details

Target:	SSBP1
---------	-------

## Target Details

---

Alternative Name:	SSBP1 ( <a href="#">SSBP1 Products</a> )
Background:	Description: This protein binds preferentially and cooperatively to ss-DNA. Probably involved in mitochondrial DNA replication. Associates with mitochondrial DNA. Gene: SSBP1
Molecular Weight:	17 kDa
Gene ID:	6742
UniProt:	<a href="#">Q04837</a>
Pathways:	<a href="#">Chromatin Binding</a>

## Application Details

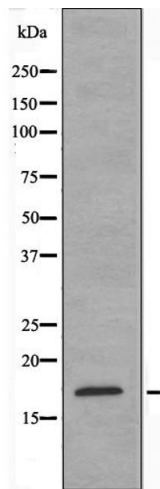
---

Application Notes:	WB 1:500-1:1000, IHC: 1:50-1:200, IF/ICC 1:100-1:500, ELISA(peptide) 1:20000-1:40000
Restrictions:	For Research Use only

## Handling

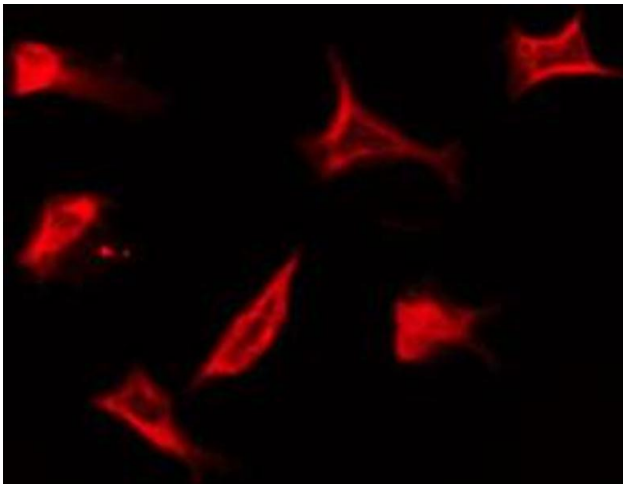
---

Format:	Liquid
Concentration:	1 mg/mL
Buffer:	Rabbit IgG in phosphate buffered saline , pH 7.4, 150 mM NaCl, 0.02 % sodium azide and 50 % glycerol.
Preservative:	Sodium azide
Precaution of Use:	This product contains Sodium azide: a POISONOUS AND HAZARDOUS SUBSTANCE which should be handled by trained staff only.
Storage:	-20 °C
Storage Comment:	Store at -20 °C. Stable for 12 months from date of receipt.
Expiry Date:	12 months



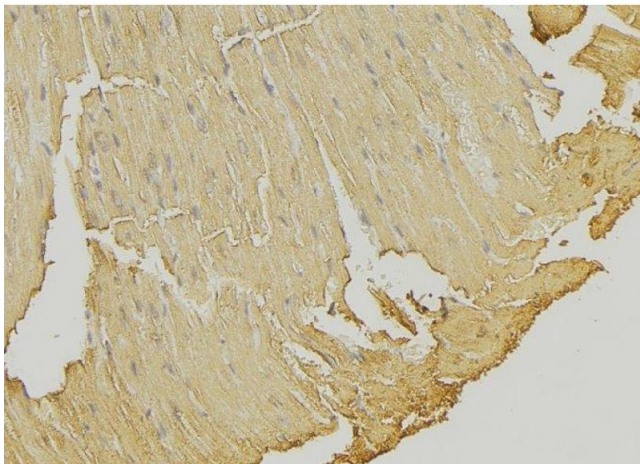
### Western Blotting

**Image 1.** Western blot analysis of extracts from HeLa cells using MtSSB antibody.



### Immunofluorescence (fixed cells)

**Image 2.** ABIN6274317 staining HuvEc by IF/ICC. The sample were fixed with PFA and permeabilized in 0.1% Triton X-100, then blocked in 10% serum for 45 minutes at 25°C. The primary antibody was diluted at 1/200 and incubated with the sample for 1 hour at 37°C. An Alexa Fluor 594 conjugated goat anti-rabbit IgG (H+L) Ab, diluted at 1/600, was used as the secondary antibody.



### Immunohistochemistry

**Image 3.** ABIN6274317 at 1/100 staining Mouse muscle tissue by IHC-P. The sample was formaldehyde fixed and a heat mediated antigen retrieval step in citrate buffer was performed. The sample was then blocked and incubated with the antibody for 1.5 hours at 22°C. An HRP conjugated goat anti-rabbit antibody was used as the secondary

Please check the [product details page](#) for more images. Overall 4 images are available for ABIN6259198.