



[Go to Product page](#)

Datasheet for ABIN6259223

## anti-TSC22D1 antibody (C-Term)

### 3 Images

#### Overview

Quantity:	100 µL
Target:	TSC22D1
Binding Specificity:	C-Term
Reactivity:	Human, Rat, Mouse
Host:	Rabbit
Clonality:	Polyclonal
Conjugate:	This TSC22D1 antibody is un-conjugated
Application:	Western Blotting (WB), ELISA, Immunohistochemistry (IHC), Immunofluorescence (IF), Immunocytochemistry (ICC)

#### Product Details

Immunogen:	A synthesized peptide derived from human TSC22D1, corresponding to a region within C-terminal amino acids.
Isotype:	IgG
Specificity:	TSC22D1 Antibody detects endogenous levels of total TSC22D1.
Predicted Reactivity:	Bovine,Horse,Rabbit,Dog,Chicken,Xenopus
Purification:	The antiserum was purified by peptide affinity chromatography using SulfoLink™ Coupling Resin (Thermo Fisher Scientific).

#### Target Details

Target:	TSC22D1
---------	---------

## Target Details

---

Alternative Name:	TSC22D1 ( <a href="#">TSC22D1 Products</a> )
Background:	Description: Transcriptional repressor. Acts on the C-type natriuretic peptide (CNP) promoter. Gene: TSC22D1
Molecular Weight:	16 kDa
Gene ID:	8848
UniProt:	<a href="#">Q15714</a>

## Application Details

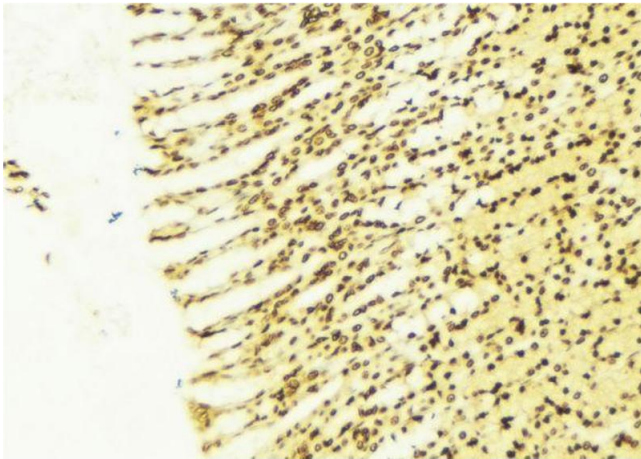
---

Application Notes:	WB 1:500-1:1000, IHC: 1:50-1:200, IF/ICC 1:100-1:500, ELISA(peptide) 1:20000-1:40000
Restrictions:	For Research Use only

## Handling

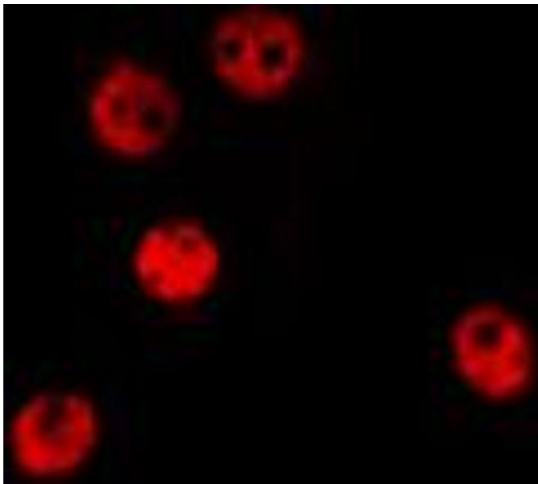
---

Format:	Liquid
Concentration:	1 mg/mL
Buffer:	Rabbit IgG in phosphate buffered saline , pH 7.4, 150 mM NaCl, 0.02 % sodium azide and 50 % glycerol.
Preservative:	Sodium azide
Precaution of Use:	This product contains Sodium azide: a POISONOUS AND HAZARDOUS SUBSTANCE which should be handled by trained staff only.
Storage:	-20 °C
Storage Comment:	Store at -20 °C. Stable for 12 months from date of receipt.
Expiry Date:	12 months



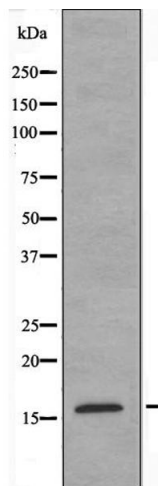
### Immunohistochemistry

**Image 1.** ABIN6274374 at 1/100 staining Human gastric tissue by IHC-P. The sample was formaldehyde fixed and a heat mediated antigen retrieval step in citrate buffer was performed. The sample was then blocked and incubated with the antibody for 1.5 hours at 22°C. An HRP conjugated goat anti-rabbit antibody was used as the secondary.



### Immunofluorescence (fixed cells)

**Image 2.** ABIN6274374 staining HepG2 by IF/ICC. The sample were fixed with PFA and permeabilized in 0.1% Triton X-100, then blocked in 10% serum for 45 minutes at 25°C. The primary antibody was diluted at 1/200 and incubated with the sample for 1 hour at 37°C. An Alexa Fluor 594 conjugated goat anti-rabbit IgG (H+L) Ab, diluted at 1/600, was used as the secondary antibody.



### Western Blotting

**Image 3.** Western blot analysis of extracts from mouse liver cells using TSC22D1 antibody.