

Datasheet for ABIN6259227
anti-TEF antibody (Internal Region)

3 Images

[Go to Product page](#)

Overview

Quantity:	100 µL
Target:	TEF
Binding Specificity:	Internal Region
Reactivity:	Human, Mouse, Rat
Host:	Rabbit
Clonality:	Polyclonal
Conjugate:	This TEF antibody is un-conjugated
Application:	Western Blotting (WB), ELISA, Immunofluorescence (IF), Immunocytochemistry (ICC)

Product Details

Immunogen:	A synthesized peptide derived from human TEF, corresponding to a region within the internal amino acids.
Isotype:	IgG
Specificity:	TEF Antibody detects endogenous levels of total TEF.
Predicted Reactivity:	Pig,Bovine,Horse,Rabbit,Dog,Chicken
Purification:	The antiserum was purified by peptide affinity chromatography using SulfoLink™ Coupling Resin (Thermo Fisher Scientific).

Target Details

Target:	TEF
---------	-----

Target Details

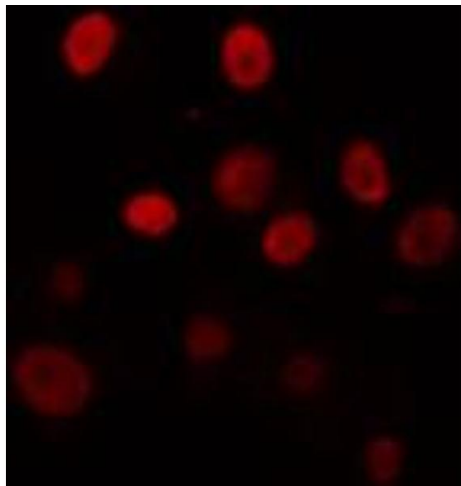
Alternative Name:	TEF (TEF Products)
Background:	Description: Transcription factor that binds to and transactivates the TSHB promoter. Binds to a minimal DNA-binding sequence 5'-[TC][AG][AG]TTA[TC][AG]-3'. Gene: TEF
Molecular Weight:	37 kDa
Gene ID:	7008
UniProt:	Q10587

Application Details

Application Notes:	WB 1:500-1:1000, IF/ICC 1:100-1:500, ELISA(peptide) 1:20000-1:40000
Restrictions:	For Research Use only

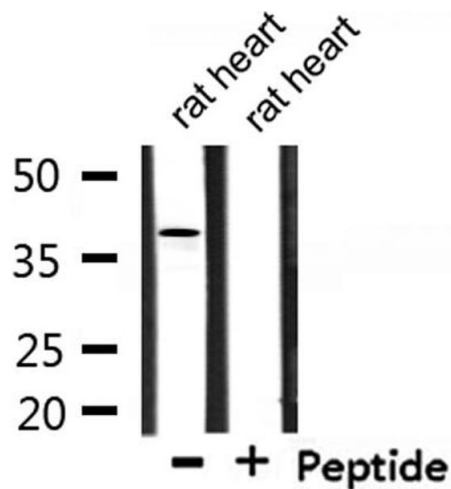
Handling

Format:	Liquid
Concentration:	1 mg/mL
Buffer:	Rabbit IgG in phosphate buffered saline , pH 7.4, 150 mM NaCl, 0.02 % sodium azide and 50 % glycerol.
Preservative:	Sodium azide
Precaution of Use:	This product contains Sodium azide: a POISONOUS AND HAZARDOUS SUBSTANCE which should be handled by trained staff only.
Storage:	-20 °C
Storage Comment:	Store at -20 °C. Stable for 12 months from date of receipt.
Expiry Date:	12 months



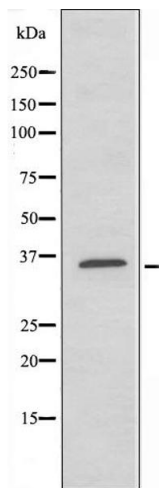
Immunofluorescence (fixed cells)

Image 1. ABIN6274325 staining Hela cells by IF/ICC. The sample were fixed with PFA and permeabilized in 0.1% Triton X-100,then blocked in 10% serum for 45 minutes at 25°C. The primary antibody was diluted at 1/200 and incubated with the sample for 1 hour at 37°C. An Alexa Fluor 594 conjugated goat anti-rabbit IgG (H+L) antibody(Cat.# S0006), diluted at 1/600, was used as secondary antibody.



Western Blotting

Image 2. Western blot analysis of extracts from rat heart, using TEF Antibody.



Western Blotting

Image 3. Western blot analysis of extracts from Jurkat cells using TEF antibody.