

Datasheet for ABIN6259243  
**anti-AGFG1 antibody (N-Term)**[Go to Product page](#)

## 1 Image

## Overview

Quantity:	100 µL
Target:	AGFG1 (HRB)
Binding Specificity:	N-Term
Reactivity:	Human, Mouse, Rat
Host:	Rabbit
Clonality:	Polyclonal
Conjugate:	This AGFG1 antibody is un-conjugated
Application:	Western Blotting (WB), ELISA

## Product Details

Immunogen:	A synthesized peptide derived from human HRB, corresponding to a region within N-terminal amino acids.
Isotype:	IgG
Specificity:	HRB Antibody detects endogenous levels of total HRB.
Predicted Reactivity:	Pig,Bovine,Xenopus
Purification:	The antiserum was purified by peptide affinity chromatography using SulfoLink™ Coupling Resin (Thermo Fisher Scientific).

## Target Details

Target:	AGFG1 (HRB)
---------	-------------

## Target Details

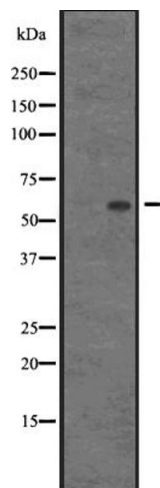
Alternative Name:	AGFG1 ( <a href="#">HRB Products</a> )
Background:	<p>Description: Required for vesicle docking or fusion during acrosome biogenesis (By similarity). May play a role in RNA trafficking or localization. In case of infection by HIV-1, acts as a cofactor for viral Rev and promotes movement of Rev-responsive element-containing RNAs from the nuclear periphery to the cytoplasm. This step is essential for HIV-1 replication.</p> <p>Gene: AGFG1</p>
Molecular Weight:	?58 kDa
Gene ID:	3267
UniProt:	<a href="#">P52594</a>

## Application Details

Application Notes:	WB 1:500-1:2000, ELISA(peptide) 1:20000-1:40000
Restrictions:	For Research Use only

## Handling

Format:	Liquid
Concentration:	1 mg/mL
Buffer:	Rabbit IgG in phosphate buffered saline, pH 7.4, 150 mM NaCl, 0.02 % sodium azide and 50 % glycerol.
Preservative:	Sodium azide
Precaution of Use:	This product contains Sodium azide: a POISONOUS AND HAZARDOUS SUBSTANCE which should be handled by trained staff only.
Storage:	-20 °C
Expiry Date:	12 months



Western Blotting

**Image 1.** Western blot analysis of HRB expression in AGFG1 transfected 293T cells, The lane on the left is treated with the antigen-specific peptide.