

Datasheet for ABIN6259245
anti-NFE2L1 antibody (N-Term)[Go to Product page](#)

1 Image

Overview

Quantity:	100 µL
Target:	NFE2L1
Binding Specificity:	N-Term
Reactivity:	Human, Mouse
Host:	Rabbit
Clonality:	Polyclonal
Conjugate:	This NFE2L1 antibody is un-conjugated
Application:	Western Blotting (WB), ELISA, Immunohistochemistry (IHC)

Product Details

Immunogen:	A synthesized peptide derived from human NFE2L1, corresponding to a region within N-terminal amino acids.
Isotype:	IgG
Specificity:	NFE2L1 Antibody detects endogenous levels of total NFE2L1.
Predicted Reactivity:	Pig,Bovine,Sheep,Rabbit,Dog
Purification:	The antiserum was purified by peptide affinity chromatography using SulfoLink™ Coupling Resin (Thermo Fisher Scientific).

Target Details

Target:	NFE2L1
---------	--------

Target Details

Alternative Name: NFE2L1 ([NFE2L1 Products](#))

Background: Description: Endoplasmic reticulum membrane sensor NFE2L1: Endoplasmic reticulum membrane sensor that translocates into the nucleus in response to various stresses to act as a transcription factor (PubMed:20932482, PubMed:24448410). Constitutes a precursor of the transcription factor NRF1 (By similarity). Able to detect various cellular stresses, such as cholesterol excess, oxidative stress or proteasome inhibition (PubMed:20932482). In response to stress, it is released from the endoplasmic reticulum membrane following cleavage by the protease DDI2 and translocates into the nucleus to form the transcription factor NRF1 (By similarity). Acts as a key sensor of cholesterol excess: in excess cholesterol conditions, the endoplasmic reticulum membrane form of the protein directly binds cholesterol via its CRAC motif, preventing cleavage and release of the transcription factor NRF1, thereby allowing expression of genes promoting cholesterol removal, such as CD36 (By similarity). Involved in proteasome homeostasis: in response to proteasome inhibition, it is released from the endoplasmic reticulum membrane, translocates to the nucleus and activates expression of genes encoding proteasome subunits (PubMed:20932482).
Gene: NFE2L1

Molecular Weight: 82 kDa

Gene ID: 4779

UniProt: [Q14494](#)

Application Details

Application Notes: WB 1:500-1:2000, IHC 1:50-1:200, ELISA(peptide) 1:20000-1:40000

Restrictions: For Research Use only

Handling

Format: Liquid

Concentration: 1 mg/mL

Buffer: Rabbit IgG in phosphate buffered saline, pH 7.4, 150 mM NaCl, 0.02 % sodium azide and 50 % glycerol.

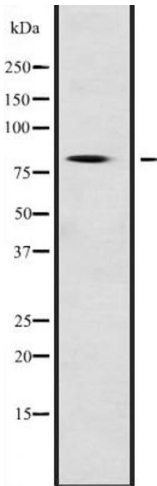
Preservative: Sodium azide

Precaution of Use: This product contains Sodium azide: a POISONOUS AND HAZARDOUS SUBSTANCE which should be handled by trained staff only.

Handling

Storage:	-20 °C
Expiry Date:	12 months

Images



Western Blotting

Image 1. Western blot analysis of NFE2L1 expression in Mouse testis lysate, The lane on the left is treated with the antigen-specific peptide.