

Datasheet for ABIN6259261  
**anti-SLC24A6 antibody (C-Term)**



[Go to Product page](#)

2 Images

## Overview

Quantity:	100 µL
Target:	SLC24A6
Binding Specificity:	C-Term
Reactivity:	Human
Host:	Rabbit
Clonality:	Polyclonal
Conjugate:	This SLC24A6 antibody is un-conjugated
Application:	Western Blotting (WB), ELISA, Immunocytochemistry (ICC), Immunofluorescence (IF)

## Product Details

Immunogen:	A synthesized peptide derived from human SLC24A6, corresponding to a region within C-terminal amino acids.
Isotype:	IgG
Specificity:	SLC24A6 Antibody detects endogenous levels of total SLC24A6.
Predicted Reactivity:	Pig,Bovine,Horse,Sheep,Rabbit,Dog
Purification:	The antiserum was purified by peptide affinity chromatography using SulfoLink™ Coupling Resin (Thermo Fisher Scientific).

## Target Details

Target:	SLC24A6
---------	---------

## Target Details

Alternative Name:	SLC8B1 ( <a href="#">SLC24A6 Products</a> )
Background:	<p>Description: Mitochondrial sodium/calcium antiporter that mediates sodium-dependent calcium efflux from mitochondrion, by mediating the exchange of 3 sodium ions per 1 calcium ion (PubMed:20018762, PubMed:22829870, PubMed:23056385, PubMed:24898248, PubMed:28219928). Plays a central role in mitochondrial calcium homeostasis by mediating mitochondrial calcium extrusion: calcium efflux is essential for mitochondrial function and cell survival, notably in cardiomyocytes (By similarity). Regulates rates of glucose-dependent insulin secretion in pancreatic beta-cells during the first phase of insulin secretion: acts by mediating efflux of calcium from mitochondrion, thereby affecting cytoplasmic calcium responses (PubMed:23056385). Required for store-operated Ca<sup>2+</sup> entry (SOCE) and Ca<sup>2+</sup> release-activated Ca<sup>2+</sup> (CRAC) channel regulation: sodium transport by SLC8B1 leads to promote calcium-shuttling that modulates mitochondrial redox status, thereby regulating SOCE activity (PubMed:28219928). Involved in B-lymphocyte chemotaxis (By similarity). Able to transport Ca<sup>2+</sup> in exchange of either Li<sup>+</sup> or Na<sup>+</sup>, explaining how Li<sup>+</sup> catalyzes Ca<sup>2+</sup> exchange (PubMed:15060069). In contrast to other members of the family its function is independent of K<sup>+</sup> (PubMed:15060069).</p> <p>Gene: SLC8B1</p>
Molecular Weight:	60 kDa
Gene ID:	80024
UniProt:	<a href="#">Q6J4K2</a>
Pathways:	<a href="#">Carbohydrate Homeostasis</a>

## Application Details

Application Notes:	WB 1:500-1:1000, IF/ICC 1:100-1:500, ELISA(peptide) 1:20000-1:40000
Restrictions:	For Research Use only

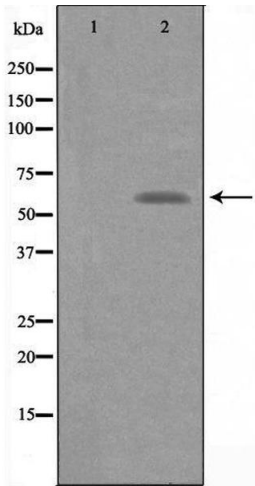
## Handling

Format:	Liquid
Concentration:	1 mg/mL
Buffer:	Rabbit IgG in phosphate buffered saline , pH 7.4, 150 mM NaCl, 0.02 % sodium azide and 50 % glycerol.
Preservative:	Sodium azide

Handling

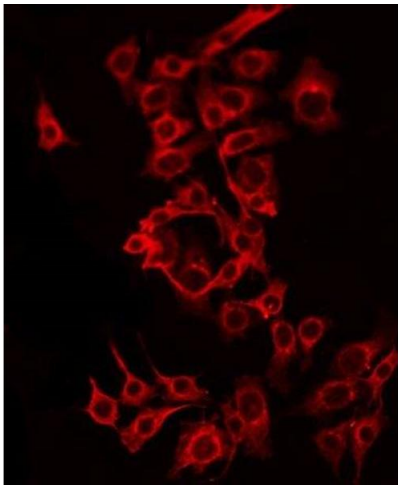
Precaution of Use:	This product contains Sodium azide: a POISONOUS AND HAZARDOUS SUBSTANCE which should be handled by trained staff only.
Storage:	-20 °C
Storage Comment:	Store at -20 °C. Stable for 12 months from date of receipt.
Expiry Date:	12 months

Images



**Western Blotting**

**Image 1.** Western blot analysis of extracts from MCF-7 cells, using SLC24A6 antibody. The lane on the left is treated with the antigen-specific peptide.



**Immunofluorescence (fixed cells)**

**Image 2.** ABIN6275590 staining MCF7 by IF/ICC. The sample were fixed with PFA and permeabilized in 0.1% Triton X-100, then blocked in 10% serum for 45 minutes at 25°C. The primary antibody was diluted at 1/200 and incubated with the sample for 1 hour at 37°C. An Alexa Fluor 594 conjugated goat anti-rabbit IgG (H+L) Ab, diluted at 1/600, was used as the secondary antibody.