

Datasheet for ABIN6259266
anti-FIL1d antibody (Internal Region)[Go to Product page](#)

1 Image

Overview

Quantity:	100 µL
Target:	FIL1d
Binding Specificity:	Internal Region
Reactivity:	Human, Mouse
Host:	Rabbit
Clonality:	Polyclonal
Conjugate:	This FIL1d antibody is un-conjugated
Application:	Western Blotting (WB), ELISA, Immunocytochemistry (ICC), Immunofluorescence (IF)

Product Details

Immunogen:	A synthesized peptide derived from human IL1F5, corresponding to a region within the internal amino acids.
Isotype:	IgG
Specificity:	IL1F5 Antibody detects endogenous levels of total IL1F5.
Predicted Reactivity:	Bovine,Horse,Sheep,Rabbit,Dog
Purification:	The antiserum was purified by peptide affinity chromatography using SulfoLink™ Coupling Resin (Thermo Fisher Scientific).

Target Details

Target:	FIL1d
---------	-------

Target Details

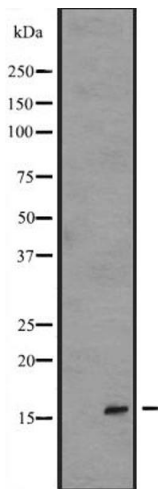
Alternative Name:	IL36RN (FIL1d Products)
Background:	<p>Description: Inhibits the activity of interleukin-36 (IL36A,IL36B and IL36G) by binding to receptor IL1RL2 and preventing its association with the coreceptor IL1RAP for signaling. Part of the IL-36 signaling system that is thought to be present in epithelial barriers and to take part in local inflammatory response, similar to the IL-1 system with which it shares the coreceptor.</p> <p>Proposed to play a role in skin inflammation. May be involved in the innate immune response to fungal pathogens, such as <i>Aspergillus fumigatus</i>. May activate an anti-inflammatory signaling pathway by recruiting SIGIRR.</p> <p>Gene: IL36RN</p>
Molecular Weight:	17 kDa
Gene ID:	26525
UniProt:	Q9UBH0

Application Details

Application Notes:	WB 1:500-1:2000, IF/ICC 1:100-1:500, ELISA(peptide) 1:20000-1:40000
Restrictions:	For Research Use only

Handling

Format:	Liquid
Concentration:	1 mg/mL
Buffer:	Rabbit IgG in phosphate buffered saline, pH 7.4, 150 mM NaCl, 0.02 % sodium azide and 50 % glycerol.
Preservative:	Sodium azide
Precaution of Use:	This product contains Sodium azide: a POISONOUS AND HAZARDOUS SUBSTANCE which should be handled by trained staff only.
Storage:	-20 °C
Expiry Date:	12 months



Western Blotting

Image 1. Western blot analysis of IL1F5 expression in Transfected 293T cell lysate ,The lane on the left is treated with the antigen-specific peptide.