

Datasheet for ABIN6259274  
**anti-S100A16 antibody (Internal Region)**[Go to Product page](#)

## 2 Images

## Overview

Quantity:	100 µL
Target:	S100A16
Binding Specificity:	Internal Region
Reactivity:	Human, Rat, Mouse
Host:	Rabbit
Clonality:	Polyclonal
Conjugate:	This S100A16 antibody is un-conjugated
Application:	Western Blotting (WB), ELISA, Immunohistochemistry (IHC), Immunocytochemistry (ICC), Immunofluorescence (IF)

## Product Details

Immunogen:	A synthesized peptide derived from human S100A16, corresponding to a region within the internal amino acids.
Isotype:	IgG
Specificity:	S100A16 Antibody detects endogenous levels of total S100A16.
Predicted Reactivity:	Pig,Bovine,Horse,Sheep,Dog
Purification:	The antiserum was purified by peptide affinity chromatography using SulfoLink™ Coupling Resin (Thermo Fisher Scientific).

## Target Details

Target:	S100A16
---------	---------

## Target Details

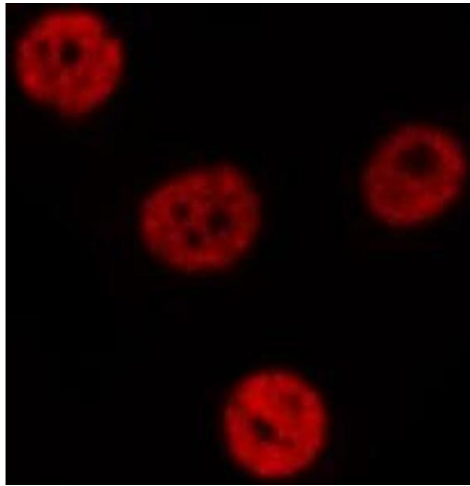
Alternative Name:	S100A16 ( <a href="#">S100A16 Products</a> )
Background:	<p>Description: Calcium-binding protein. Binds one calcium ion per monomer (PubMed:17030513). Can promote differentiation of adipocytes (in vitro) (By similarity). Overexpression in preadipocytes increases their proliferation, enhances adipogenesis and reduces insulin-stimulated glucose uptake (By similarity).</p> <p>Gene: S100A16</p>
Molecular Weight:	20 kDa
Gene ID:	140576
UniProt:	<a href="#">Q96FQ6</a>
Pathways:	<a href="#">S100 Proteins</a>

## Application Details

Application Notes:	WB 1:500-1:1000, IHC 1:100-200, IF/ICC 1:100-1:500, ELISA(peptide) 1:20000-1:40000
Restrictions:	For Research Use only

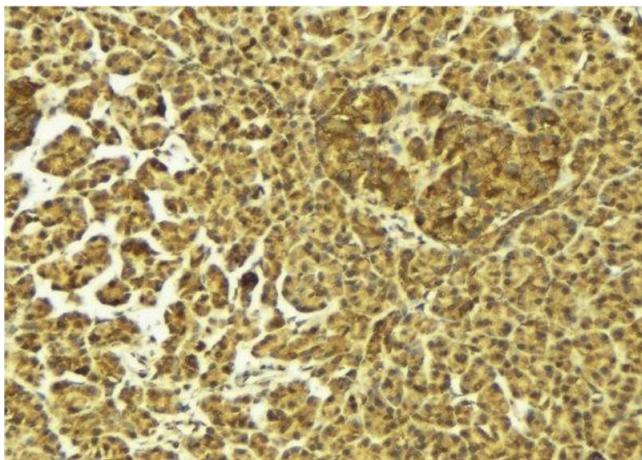
## Handling

Format:	Liquid
Concentration:	1 mg/mL
Buffer:	Rabbit IgG in phosphate buffered saline , pH 7.4, 150 mM NaCl, 0.02 % sodium azide and 50 % glycerol.
Preservative:	Sodium azide
Precaution of Use:	This product contains Sodium azide: a POISONOUS AND HAZARDOUS SUBSTANCE which should be handled by trained staff only.
Storage:	-20 °C
Storage Comment:	Store at -20 °C. Stable for 12 months from date of receipt.
Expiry Date:	12 months



#### Immunofluorescence (fixed cells)

**Image 1.** ABIN6275418 staining NIH-3T3 cells by IF/ICC. The sample were fixed with PFA and permeabilized in 0.1% Triton X-100, then blocked in 10% serum for 45 minutes at 25°C. The primary antibody was diluted at 1/200 and incubated with the sample for 1 hour at 37°C. An Alexa Fluor 594 conjugated goat anti-rabbit IgG (H+L) antibody (Cat.# S0006), diluted at 1/600, was used as secondary antibody



#### Immunohistochemistry

**Image 2.** ABIN6275418 at 1/100 staining Mouse pancreas tissue by IHC-P. The sample was formaldehyde fixed and a heat mediated antigen retrieval step in citrate buffer was performed. The sample was then blocked and incubated with the antibody for 1.5 hours at 22°C. An HRP conjugated goat anti-rabbit antibody was used as the secondary