

Datasheet for ABIN6259279

anti-SLC24A3 antibody (Internal Region)**3** Images[Go to Product page](#)

Overview

Quantity:	100 µL
Target:	SLC24A3
Binding Specificity:	Internal Region
Reactivity:	Human, Mouse, Rat
Host:	Rabbit
Clonality:	Polyclonal
Conjugate:	This SLC24A3 antibody is un-conjugated
Application:	ELISA, Western Blotting (WB), Immunohistochemistry (IHC), Immunofluorescence (IF), Immunocytochemistry (ICC)

Product Details

Immunogen:	A synthesized peptide derived from human SLC24A3, corresponding to a region within the internal amino acids.
Isotype:	IgG
Specificity:	SLC24A3 Antibody detects endogenous levels of total SLC24A3.
Predicted Reactivity:	Pig,Bovine,Horse,Sheep,Rabbit,Dog,Chicken
Purification:	The antiserum was purified by peptide affinity chromatography using SulfoLink™ Coupling Resin (Thermo Fisher Scientific).

Target Details

Target:	SLC24A3
---------	---------

Target Details

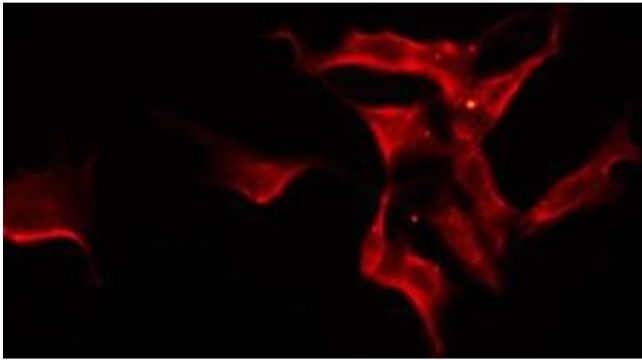
Alternative Name:	SLC24A3 (SLC24A3 Products)
Background:	Description: Transports 1 Ca ²⁺ and 1 K ⁺ in exchange for 4 Na ⁺ . Gene: SLC24A3
Molecular Weight:	61 kDa
Gene ID:	57419
UniProt:	Q9HC58

Application Details

Application Notes:	WB 1:500-1:1000, IF/ICC 1:100-1:500, IHC 1:50-1:200, ELISA(peptide) 1:20000-1:40000
Restrictions:	For Research Use only

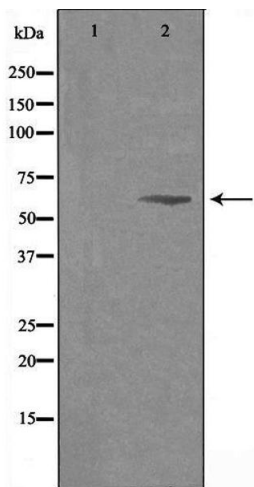
Handling

Format:	Liquid
Concentration:	1 mg/mL
Buffer:	Rabbit IgG in phosphate buffered saline , pH 7.4, 150 mM NaCl, 0.02 % sodium azide and 50 % glycerol.
Preservative:	Sodium azide
Precaution of Use:	This product contains Sodium azide: a POISONOUS AND HAZARDOUS SUBSTANCE which should be handled by trained staff only.
Storage:	-20 °C
Storage Comment:	Store at -20 °C. Stable for 12 months from date of receipt.
Expiry Date:	12 months



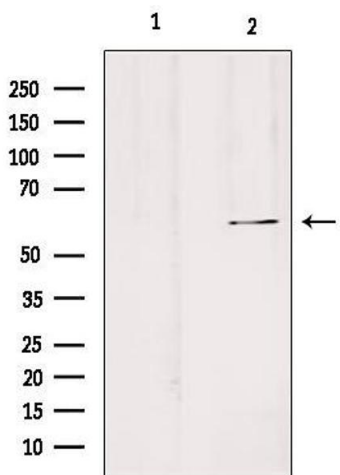
Immunofluorescence (fixed cells)

Image 1. ABIN6275588 staining Hela by IF/ICC. The sample were fixed with PFA and permeabilized in 0.1% Triton X-100, then blocked in 10% serum for 45 minutes at 25°C. The primary antibody was diluted at 1/200 and incubated with the sample for 1 hour at 37°C. An Alexa Fluor 594 conjugated goat anti-rabbit IgG (H+L) Ab, diluted at 1/600, was used as the secondary antibody



Western Blotting

Image 2. Western blot analysis of extracts from K562 cells, using SLC24A3 antibody. The lane on the left is treated with the antigen-specific peptide.



Western Blotting

Image 3. Western blot analysis of extracts from Hela, using SLC24A3 Antibody. Lane 1 was treated with the blocking peptide.