

Datasheet for ABIN6259302
anti-PPP1R16A antibody (Internal Region)[Go to Product page](#)

1 Image

Overview

Quantity:	100 µL
Target:	PPP1R16A
Binding Specificity:	Internal Region
Reactivity:	Human, Rat
Host:	Rabbit
Clonality:	Polyclonal
Conjugate:	This PPP1R16A antibody is un-conjugated
Application:	Western Blotting (WB), ELISA

Product Details

Immunogen:	A synthesized peptide derived from human PPP1R16A, corresponding to a region within the internal amino acids.
Isotype:	IgG
Specificity:	PPP1R16A Antibody detects endogenous levels of total PPP1R16A.
Purification:	The antiserum was purified by peptide affinity chromatography using SulfoLink™ Coupling Resin (Thermo Fisher Scientific).

Target Details

Target:	PPP1R16A
Alternative Name:	PPP1R16A (PPP1R16A Products)

Target Details

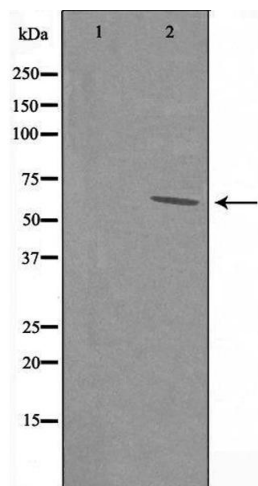
Background:	Description: Inhibits protein phosphatase 1 activity toward phosphorylase, myosin light chain and myosin substrates. Gene: PPP1R16A
Molecular Weight:	60 kDa
Gene ID:	84988
UniProt:	Q96I34

Application Details

Application Notes:	WB 1:500-1:1000, ELISA(peptide) 1:20000-1:40000
Restrictions:	For Research Use only

Handling

Format:	Liquid
Concentration:	1 mg/mL
Buffer:	Rabbit IgG in phosphate buffered saline , pH 7.4, 150 mM NaCl, 0.02 % sodium azide and 50 % glycerol.
Preservative:	Sodium azide
Precaution of Use:	This product contains Sodium azide: a POISONOUS AND HAZARDOUS SUBSTANCE which should be handled by trained staff only.
Storage:	-20 °C
Storage Comment:	Store at -20 °C. Stable for 12 months from date of receipt.
Expiry Date:	12 months



Western Blotting

Image 1. Western blot analysis of extracts from Rat heart cells, using PPP1R16A antibody. The lane on the left is treated with the antigen-specific peptide.