

Datasheet for ABIN6259304
anti-Shugoshin antibody (N-Term)[Go to Product page](#)

1 Image

Overview

Quantity:	100 µL
Target:	Shugoshin (SGOL1)
Binding Specificity:	N-Term
Reactivity:	Human, Mouse, Rat
Host:	Rabbit
Clonality:	Polyclonal
Conjugate:	This Shugoshin antibody is un-conjugated
Application:	ELISA, Western Blotting (WB)

Product Details

Immunogen:	A synthesized peptide derived from human SGOL1, corresponding to a region within N-terminal amino acids.
Isotype:	IgG
Specificity:	SGOL1 Antibody detects endogenous levels of total SGOL1.
Predicted Reactivity:	Pig,Zebrafish,Bovine,Horse,Rabbit,Dog,Xenopus
Purification:	The antiserum was purified by peptide affinity chromatography using SulfoLink™ Coupling Resin (Thermo Fisher Scientific).

Target Details

Target:	Shugoshin (SGOL1)
---------	-------------------

Target Details

Alternative Name:	SGO1 (SGOL1 Products)
Background:	<p>Description: Plays a central role in chromosome cohesion during mitosis by preventing premature dissociation of cohesin complex from centromeres after prophase, when most of cohesin complex dissociates from chromosomes arms. May act by preventing phosphorylation of the STAG2 subunit of cohesin complex at the centromere, ensuring cohesin persistence at centromere until cohesin cleavage by ESPL1/separase at anaphase. Essential for proper chromosome segregation during mitosis and this function requires interaction with PPP2R1A. Its phosphorylated form is necessary for chromosome congression and for the proper attachment of spindle microtubule to the kinetochore. Necessary for kinetochore localization of PLK1 and CENPF. May play a role in the tension sensing mechanism of the spindle-assembly checkpoint by regulating PLK1 kinetochore affinity. Isoform 3 plays a role in maintaining centriole cohesion involved in controlling spindle pole integrity. Involved in centromeric enrichment of AUKRB in prometaphase.</p> <p>Gene: SGO1</p>
Molecular Weight:	64 kDa
Gene ID:	151648
UniProt:	Q5FBB7
Pathways:	Maintenance of Protein Location

Application Details

Application Notes:	WB 1:500-1:1000, ELISA(peptide) 1:20000-1:40000
Restrictions:	For Research Use only

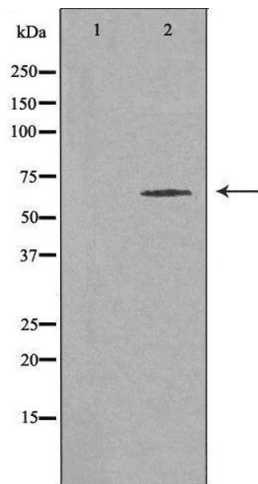
Handling

Format:	Liquid
Concentration:	1 mg/mL
Buffer:	Rabbit IgG in phosphate buffered saline , pH 7.4, 150 mM NaCl, 0.02 % sodium azide and 50 % glycerol.
Preservative:	Sodium azide
Precaution of Use:	This product contains Sodium azide: a POISONOUS AND HAZARDOUS SUBSTANCE which should be handled by trained staff only.

Handling

Storage:	-20 °C
Storage Comment:	Store at -20 °C. Stable for 12 months from date of receipt.
Expiry Date:	12 months

Images



Western Blotting

Image 1. Western blot analysis of extracts from HeLa cells, using SGOL1 antibody. The lane on the left is treated with the antigen-specific peptide.