

Datasheet for ABIN6259318
anti-MRPS18C antibody (Internal Region)

3 Images

[Go to Product page](#)

Overview

Quantity:	100 µL
Target:	MRPS18C
Binding Specificity:	Internal Region
Reactivity:	Human, Mouse, Rat
Host:	Rabbit
Clonality:	Polyclonal
Conjugate:	This MRPS18C antibody is un-conjugated
Application:	ELISA, Western Blotting (WB), Immunohistochemistry (IHC), Immunofluorescence (IF), Immunocytochemistry (ICC)

Product Details

Immunogen:	A synthesized peptide derived from human MRPS18C, corresponding to a region within the internal amino acids.
Isotype:	IgG
Specificity:	MRPS18C Antibody detects endogenous levels of total MRPS18C.
Predicted Reactivity:	Pig,Zebrafish,Bovine,Horse,Sheep,Chicken
Purification:	The antiserum was purified by peptide affinity chromatography using SulfoLink™ Coupling Resin (Thermo Fisher Scientific).

Target Details

Target:	MRPS18C
---------	---------

Target Details

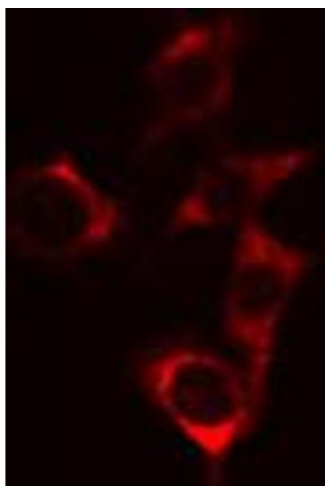
Alternative Name:	MRPS18C (MRPS18C Products)
Background:	<p>Description: There are 3 mitochondrial isoforms of bS18 in mammalia, localizing to 3 distinct sites in the mitoribosome. bS18m (bs18c, this protein) binds to the same site as bacterial bS18, mS40 (bS18b) binds to a novel location of the 28S small subunit, and mL66 (bS18a) binds to the 39S large subunit.</p> <p>Gene: MRPS18C</p>
Molecular Weight:	16 kDa
Gene ID:	51023
UniProt:	Q9Y3D5

Application Details

Application Notes:	WB 1:500-1:1000, IHC: 1:50-1:200, IF/ICC 1:100-1:500, ELISA(peptide) 1:20000-1:40000
Restrictions:	For Research Use only

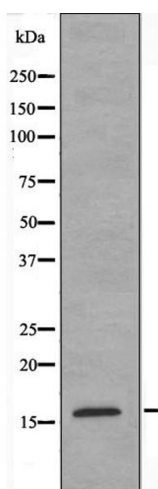
Handling

Format:	Liquid
Concentration:	1 mg/mL
Buffer:	Rabbit IgG in phosphate buffered saline , pH 7.4, 150 mM NaCl, 0.02 % sodium azide and 50 % glycerol.
Preservative:	Sodium azide
Precaution of Use:	This product contains Sodium azide: a POISONOUS AND HAZARDOUS SUBSTANCE which should be handled by trained staff only.
Storage:	-20 °C
Storage Comment:	Store at -20 °C. Stable for 12 months from date of receipt.
Expiry Date:	12 months



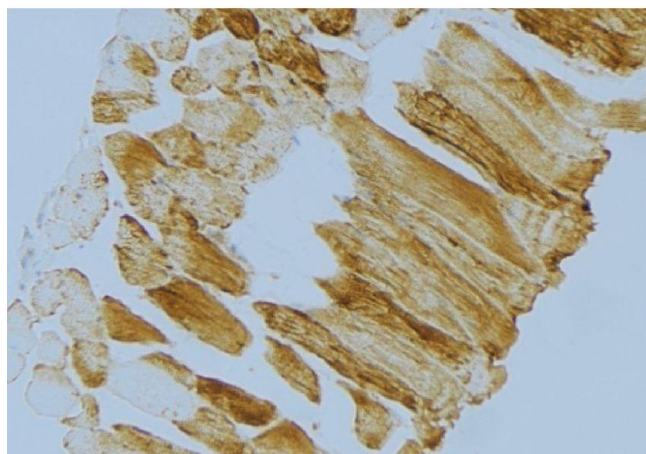
Immunofluorescence (fixed cells)

Image 1. ABIN6274720 staining HeLa cells by IF/ICC. The sample were fixed with PFA and permeabilized in 0.1% Triton X-100, then blocked in 10% serum for 45 minutes at 25°C. The primary antibody was diluted at 1/200 and incubated with the sample for 1 hour at 37°C. An Alexa Fluor 594 conjugated goat anti-rabbit IgG (H+L) antibody (Cat.# S0006), diluted at 1/600, was used as secondary antibody.



Western Blotting

Image 2. Western blot analysis of extracts from K562 cells, using MRPS18C antibody.



Immunohistochemistry

Image 3. ABIN6274720 at 1/100 staining Mouse muscle tissue by IHC-P. The sample was formaldehyde fixed and a heat mediated antigen retrieval step in citrate buffer was performed. The sample was then blocked and incubated with the antibody for 1.5 hours at 22°C. An HRP conjugated goat anti-rabbit antibody was used as the secondary