



[Go to Product page](#)

Datasheet for ABIN6259324
anti-NDUFA4L2 antibody (C-Term)

2 Images

Overview

| | |
|----------------------|--|
| Quantity: | 100 µL |
| Target: | NDUFA4L2 |
| Binding Specificity: | C-Term |
| Reactivity: | Human, Mouse, Rat |
| Host: | Rabbit |
| Clonality: | Polyclonal |
| Conjugate: | This NDUFA4L2 antibody is un-conjugated |
| Application: | ELISA, Western Blotting (WB), Immunohistochemistry (IHC), Immunofluorescence (IF), Immunocytochemistry (ICC) |

Product Details

| | |
|-----------------------|---|
| Immunogen: | A synthesized peptide derived from human NDUFA4L2, corresponding to a region within C-terminal amino acids. |
| Isotype: | IgG |
| Specificity: | NDUFA4L2 Antibody detects endogenous levels of total NDUFA4L2. |
| Predicted Reactivity: | Pig,Bovine,Horse,Sheep,Rabbit,Dog |
| Purification: | The antiserum was purified by peptide affinity chromatography using SulfoLink™ Coupling Resin (Thermo Fisher Scientific). |

Target Details

| | |
|---------|----------|
| Target: | NDUFA4L2 |
|---------|----------|

Target Details

Alternative Name: [NDUFA4L2 \(NDUFA4L2 Products\)](#)

Background: Gene: NDUFA4L2

Molecular Weight: 15 kDa

Gene ID: 56901

UniProt: [Q9NRX3](#)

Application Details

Application Notes: WB 1:500-1:1000, IF/ICC 1:100-1:500, IHC 1:50-1:200, ELISA(peptide) 1:20000-1:40000

Restrictions: For Research Use only

Handling

Format: Liquid

Concentration: 1 mg/mL

Buffer: Rabbit IgG in phosphate buffered saline , pH 7.4, 150 mM NaCl, 0.02 % sodium azide and 50 % glycerol.

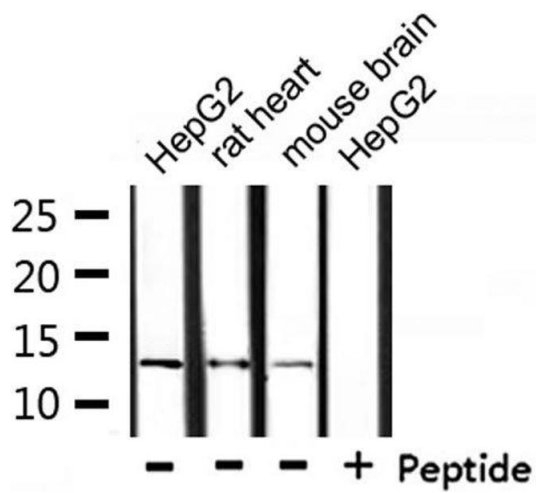
Preservative: Sodium azide

Precaution of Use: This product contains Sodium azide: a POISONOUS AND HAZARDOUS SUBSTANCE which should be handled by trained staff only.

Storage: -20 °C

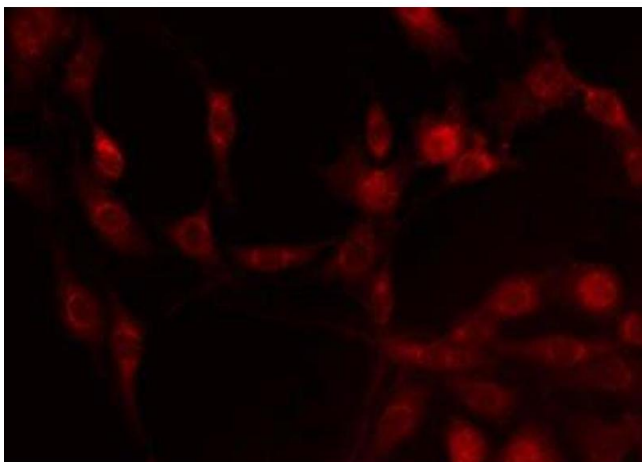
Storage Comment: Store at -20 °C. Stable for 12 months from date of receipt.

Expiry Date: 12 months



Western Blotting

Image 1. Western blot analysis of extracts from HepG2, rat heart and mouse brain, using NDUFA4L2 Antibody.



Immunofluorescence (fixed cells)

Image 2. ABIN6275270 staining HepG2 by IF/ICC. The sample were fixed with PFA and permeabilized in 0.1% Triton X-100, then blocked in 10% serum for 45 minutes at 25°C. The primary antibody was diluted at 1/200 and incubated with the sample for 1 hour at 37°C. An Alexa Fluor 594 conjugated goat anti-rabbit IgG (H+L) Ab, diluted at 1/600, was used as the secondary antibody.