

Datasheet for ABIN6259326

anti-NBPF4 antibody**2** Images[Go to Product page](#)

Overview

Quantity:	100 µL
Target:	NBPF4
Reactivity:	Human, Mouse
Host:	Rabbit
Clonality:	Polyclonal
Conjugate:	This NBPF4 antibody is un-conjugated
Application:	ELISA, Immunohistochemistry (IHC), Western Blotting (WB)

Product Details

Immunogen:	A synthesized peptide
Isotype:	IgG
Specificity:	NBPF4 antibody detects endogenous levels of total NBPF4
Cross-Reactivity:	Human, Mouse (Murine)
Purification:	The antiserum was purified by peptide affinity chromatography using SulfoLink™ Coupling Resin (Thermo Fisher Scientific).

Target Details

Target:	NBPF4
Alternative Name:	NBPF4 (NBPF4 Products)
Background:	Description: Encoded by one of the numerous copies of NBPF genes clustered in the p36, p12

Target Details

and q21 region of the chromosome 1.

Gene: NBPF4

Gene ID: 148545

UniProt: [Q96M43](#)

Application Details

Application Notes: WB 1:500-1:2000 IHC 1:50-1:200

Restrictions: For Research Use only

Handling

Format: Liquid

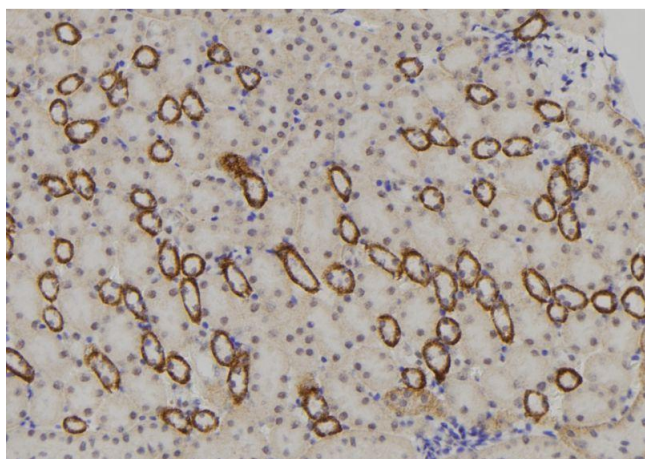
Concentration: 1 mg/mL

Buffer: Rabbit IgG in phosphate buffered saline, pH 7.4, 150 mM NaCl, 0.02 % sodium azide and 50 % glycerol.

Preservative: Sodium azide

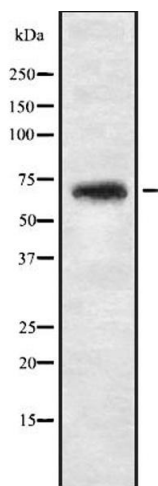
Precaution of Use: This product contains Sodium azide: a POISONOUS AND HAZARDOUS SUBSTANCE which should be handled by trained staff only.

Images



Immunohistochemistry

Image 1. ABIN6273369 at 1/100 staining Mouse kidney tissue by IHC-P. The sample was formaldehyde fixed and a heat mediated antigen retrieval step in citrate buffer was performed. The sample was then blocked and incubated with the antibody for 1.5 hours at 22°C. An HRP conjugated goat anti-rabbit antibody was used as the secondary.



Western Blotting

Image 2. Western blot analysis of NBPF4 expression in 293T whole cell lysate ,The lane on the left is treated with the antigen-specific peptide.