

Datasheet for ABIN6259327

anti-NBPF5 antibody[Go to Product page](#)**1** Image

Overview

Quantity:	100 µL
Target:	NBPF5
Reactivity:	Human
Host:	Rabbit
Clonality:	Polyclonal
Conjugate:	This NBPF5 antibody is un-conjugated
Application:	Western Blotting (WB), ELISA, Immunocytochemistry (ICC), Immunofluorescence (IF)

Product Details

Immunogen:	A synthesized peptide
Isotype:	IgG
Specificity:	NBPF5 Antibody detects endogenous levels of total NBPF5
Cross-Reactivity:	Human
Purification:	The antiserum was purified by peptide affinity chromatography using SulfoLink™ Coupling Resin (Thermo Fisher Scientific).

Target Details

Target:	NBPF5
Alternative Name:	NBPF5 (NBPF5 Products)
Background:	Description: Encoded by one of the numerous copies of NBPF genes clustered in the p36, p12

Target Details

and q21 region of the chromosome 1.

Gene: NBPf5P

Molecular Weight: 41 kDa

UniProt: [Q86XG9](#)

Application Details

Application Notes: WB 1:500~1:1000, IF/ICC 1:100-1:500

Restrictions: For Research Use only

Handling

Format: Liquid

Concentration: 1 mg/mL

Buffer: Rabbit IgG in phosphate buffered saline , pH 7.4, 150 mM NaCl, 0.02 % sodium azide and 50 % glycerol.

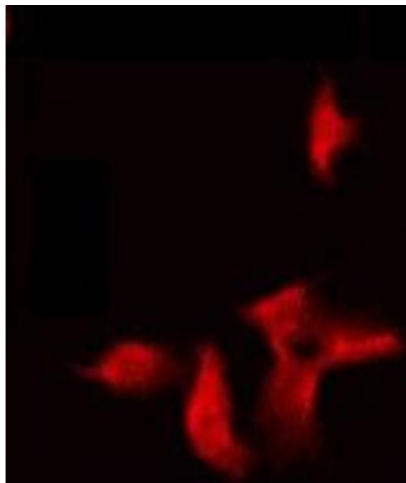
Preservative: Sodium azide

Precaution of Use: This product contains Sodium azide: a POISONOUS AND HAZARDOUS SUBSTANCE which should be handled by trained staff only.

Storage: -20 °C

Storage Comment: Store at -20 °C. Stable for 12 months from date of receipt

Expiry Date: 12 months



Immunofluorescence (fixed cells)

Image 1. ABIN6275300 staining HeLa by IF/ICC. The sample were fixed with PFA and permeabilized in 0.1% Triton X-100, then blocked in 10% serum for 45 minutes at 25°C. The primary antibody was diluted at 1/200 and incubated with the sample for 1 hour at 37°C. An Alexa Fluor 594 conjugated goat anti-rabbit IgG (H+L) Ab, diluted at 1/600, was used as the secondary antibody.