

Datasheet for ABIN6259346  
**anti-PRSS33 antibody (N-Term)**[Go to Product page](#)

## 1 Image

## Overview

Quantity:	100 µL
Target:	PRSS33
Binding Specificity:	N-Term
Reactivity:	Human
Host:	Rabbit
Clonality:	Polyclonal
Conjugate:	This PRSS33 antibody is un-conjugated
Application:	Western Blotting (WB), ELISA, Immunocytochemistry (ICC), Immunofluorescence (IF)

## Product Details

Immunogen:	A synthesized peptide derived from human PRSS33, corresponding to a region within N-terminal amino acids.
Isotype:	IgG
Specificity:	PRSS33 Antibody detects endogenous levels of total PRSS33.
Predicted Reactivity:	Pig,Bovine,Horse,Rabbit
Purification:	The antiserum was purified by peptide affinity chromatography using SulfoLink™ Coupling Resin (Thermo Fisher Scientific).

## Target Details

Target:	PRSS33
---------	--------

## Target Details

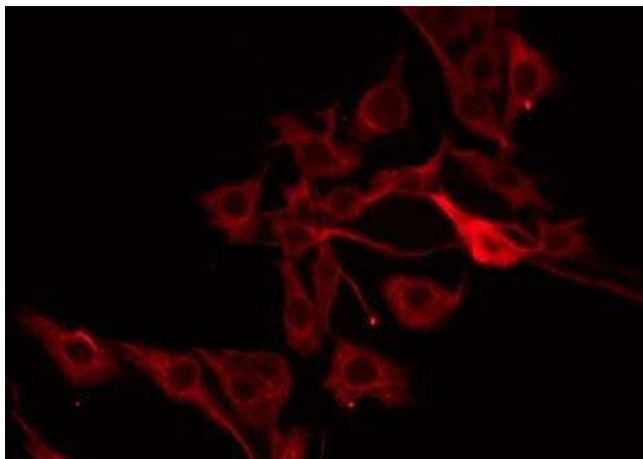
Alternative Name:	PRSS33 ( <a href="#">PRSS33 Products</a> )
Background:	Description: Serine protease that has amidolytic activity, cleaving its substrates before Arg residues. Gene: PRSS33
Molecular Weight:	26 kDa
Gene ID:	260429
UniProt:	<a href="#">Q8NF86</a>

## Application Details

Application Notes:	WB 1:500-1:1000, IF/ICC 1:100-1:500, ELISA(peptide) 1:20000-1:40000
Restrictions:	For Research Use only

## Handling

Format:	Liquid
Concentration:	1 mg/mL
Buffer:	Rabbit IgG in phosphate buffered saline , pH 7.4, 150 mM NaCl, 0.02 % sodium azide and 50 % glycerol.
Preservative:	Sodium azide
Precaution of Use:	This product contains Sodium azide: a POISONOUS AND HAZARDOUS SUBSTANCE which should be handled by trained staff only.
Storage:	-20 °C
Storage Comment:	Store at -20 °C. Stable for 12 months from date of receipt.
Expiry Date:	12 months



#### Immunofluorescence (fixed cells)

**Image 1.** ABIN6275525 staining COLO205 by IF/ICC. The sample were fixed with PFA and permeabilized in 0.1% Triton X-100, then blocked in 10% serum for 45 minutes at 25°C. The primary antibody was diluted at 1/200 and incubated with the sample for 1 hour at 37°C. An Alexa Fluor 594 conjugated goat anti-rabbit IgG (H+L) Ab, diluted at 1/600, was used as the secondary antibody.