

Datasheet for ABIN6259347
anti-PPP4R1L antibody



[Go to Product page](#)

2 Images

Overview

Quantity:	100 µL
Target:	PPP4R1L
Reactivity:	Human
Host:	Rabbit
Clonality:	Polyclonal
Conjugate:	This PPP4R1L antibody is un-conjugated
Application:	Western Blotting (WB), ELISA, Immunofluorescence (IF), Immunocytochemistry (ICC)

Product Details

Immunogen:	A synthesized peptide
Isotype:	IgG
Specificity:	PPP4R1L Antibody detects endogenous levels of total PPP4R1L
Cross-Reactivity:	Human
Purification:	The antiserum was purified by peptide affinity chromatography using SulfoLink™ Coupling Resin (Thermo Fisher Scientific).

Target Details

Target:	PPP4R1L
Alternative Name:	PPP4R1L (PPP4R1L Products)
Background:	Description: May be a regulatory subunit of serine/threonine-protein phosphatase 4.

Target Details

Gene: PPP4R1L

Molecular Weight: 50 kDa

UniProt: [Q9P1A2](#)

Application Details

Application Notes: WB 1:500~1:1000, IF/ICC 1:100-1:500

Restrictions: For Research Use only

Handling

Format: Liquid

Concentration: 1 mg/mL

Buffer: Rabbit IgG in phosphate buffered saline , pH 7.4, 150 mM NaCl, 0.02 % sodium azide and 50 % glycerol.

Preservative: Sodium azide

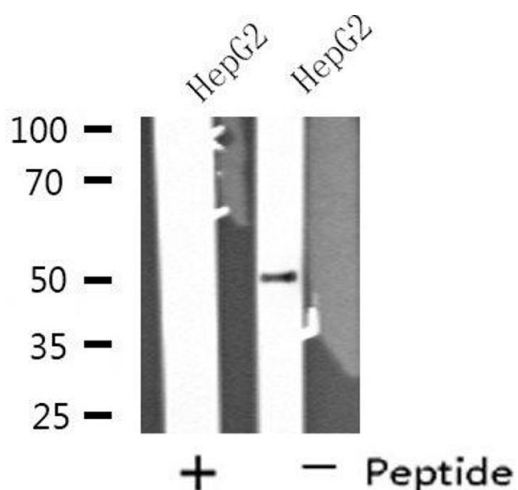
Precaution of Use: This product contains Sodium azide: a POISONOUS AND HAZARDOUS SUBSTANCE which should be handled by trained staff only.

Storage: -20 °C

Storage Comment: Store at -20 °C. Stable for 12 months from date of receipt

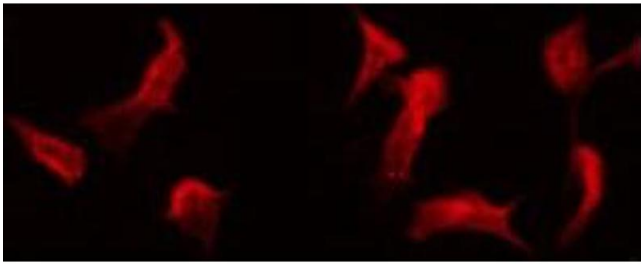
Expiry Date: 12 months

Images



Western Blotting

Image 1. Western blot analysis of extracts from HepG2 cells using PPP4R1L antibody.



Immunofluorescence (fixed cells)

Image 2. ABIN6275551 staining COLO205 by IF/ICC. The sample were fixed with PFA and permeabilized in 0.1% Triton X-100, then blocked in 10% serum for 45 minutes at 25°C. The primary antibody was diluted at 1/200 and incubated with the sample for 1 hour at 37°C. An Alexa Fluor 594 conjugated goat anti-rabbit IgG (H+L) Ab, diluted at 1/600, was used as the secondary antibody