

Datasheet for ABIN6259375
anti-OR2G3 antibody (Internal Region)[Go to Product page](#)

1 Image

Overview

| | |
|----------------------|--|
| Quantity: | 100 µL |
| Target: | OR2G3 |
| Binding Specificity: | Internal Region |
| Reactivity: | Human |
| Host: | Rabbit |
| Clonality: | Polyclonal |
| Conjugate: | This OR2G3 antibody is un-conjugated |
| Application: | Western Blotting (WB), ELISA, Immunofluorescence (IF), Immunocytochemistry (ICC) |

Product Details

| | |
|---------------|---|
| Immunogen: | A synthesized peptide derived from human OR2G3, corresponding to a region within the internal amino acids. |
| Isotype: | IgG |
| Specificity: | OR2G3 Antibody detects endogenous levels of total OR2G3. |
| Purification: | The antiserum was purified by peptide affinity chromatography using SulfoLink™ Coupling Resin (Thermo Fisher Scientific). |

Target Details

| | |
|-------------------|--|
| Target: | OR2G3 |
| Alternative Name: | OR2G3 (OR2G3 Products) |

Target Details

| | |
|-------------|---|
| Background: | Description: Odorant receptor. Gene: OR2G3 |
|-------------|---|

| | |
|-------------------|--------|
| Molecular Weight: | 35 kDa |
|-------------------|--------|

| | |
|----------|-------|
| Gene ID: | 81469 |
|----------|-------|

| | |
|----------|------------------------|
| UniProt: | Q8NGZ4 |
|----------|------------------------|

Application Details

| | |
|--------------------|---|
| Application Notes: | WB 1:500-1:1000, IF/ICC 1:100-1:500, ELISA(peptide) 1:20000-1:40000 |
|--------------------|---|

| | |
|---------------|-----------------------|
| Restrictions: | For Research Use only |
|---------------|-----------------------|

Handling

| | |
|---------|--------|
| Format: | Liquid |
|---------|--------|

| | |
|----------------|---------|
| Concentration: | 1 mg/mL |
|----------------|---------|

| | |
|---------|---|
| Buffer: | Rabbit IgG in phosphate buffered saline , pH 7.4, 150 mM NaCl, 0.02 % sodium azide and 50 % glycerol. |
|---------|---|

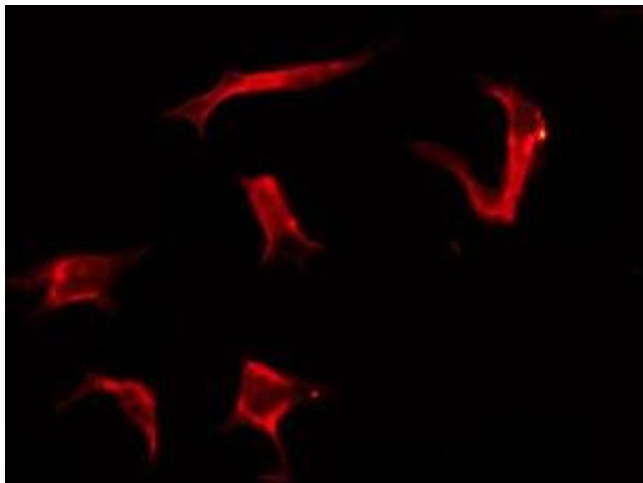
| | |
|---------------|--------------|
| Preservative: | Sodium azide |
|---------------|--------------|

| | |
|--------------------|--|
| Precaution of Use: | This product contains Sodium azide: a POISONOUS AND HAZARDOUS SUBSTANCE which should be handled by trained staff only. |
|--------------------|--|

| | |
|----------|--------|
| Storage: | -20 °C |
|----------|--------|

| | |
|------------------|---|
| Storage Comment: | Store at -20 °C. Stable for 12 months from date of receipt. |
|------------------|---|

| | |
|--------------|-----------|
| Expiry Date: | 12 months |
|--------------|-----------|



Immunofluorescence (fixed cells)

Image 1. ABIN6276133 staining HeLa by IF/ICC. The sample were fixed with PFA and permeabilized in 0.1% Triton X-100, then blocked in 10% serum for 45 minutes at 25°C. The primary antibody was diluted at 1/200 and incubated with the sample for 1 hour at 37°C. An Alexa Fluor 594 conjugated goat anti-rabbit IgG (H+L) Ab, diluted at 1/600, was used as the secondary antibody.