

Datasheet for ABIN6259436

**anti-OR5D16 antibody (Internal Region)**[Go to Product page](#)**1** Image

## Overview

Quantity:	100 µL
Target:	OR5D16
Binding Specificity:	Internal Region
Reactivity:	Human
Host:	Rabbit
Clonality:	Polyclonal
Conjugate:	This OR5D16 antibody is un-conjugated
Application:	ELISA, Western Blotting (WB), Immunocytochemistry (ICC), Immunofluorescence (IF)

## Product Details

Immunogen:	A synthesized peptide derived from human OR5D16, corresponding to a region within the internal amino acids.
Isotype:	IgG
Specificity:	OR5D16 Antibody detects endogenous levels of total OR5D16.
Predicted Reactivity:	Rabbit
Purification:	The antiserum was purified by peptide affinity chromatography using SulfoLink™ Coupling Resin (Thermo Fisher Scientific).

## Target Details

Target:	OR5D16
---------	--------

## Target Details

Alternative Name:	OR5D16 ( <a href="#">OR5D16 Products</a> )
-------------------	--

Background:	Description: Odorant receptor. Gene: OR5D16
-------------	--

Molecular Weight:	38 kDa
-------------------	--------

Gene ID:	390144
----------	--------

UniProt:	<a href="#">Q8NGK9</a>
----------	------------------------

## Application Details

Application Notes:	WB 1:500-1:1000, IF/ICC 1:100-1:500, ELISA(peptide) 1:20000-1:40000
--------------------	---

Restrictions:	For Research Use only
---------------	-----------------------

## Handling

Format:	Liquid
---------	--------

Concentration:	1 mg/mL
----------------	---------

Buffer:	Rabbit IgG in phosphate buffered saline , pH 7.4, 150 mM NaCl, 0.02 % sodium azide and 50 % glycerol.
---------	---

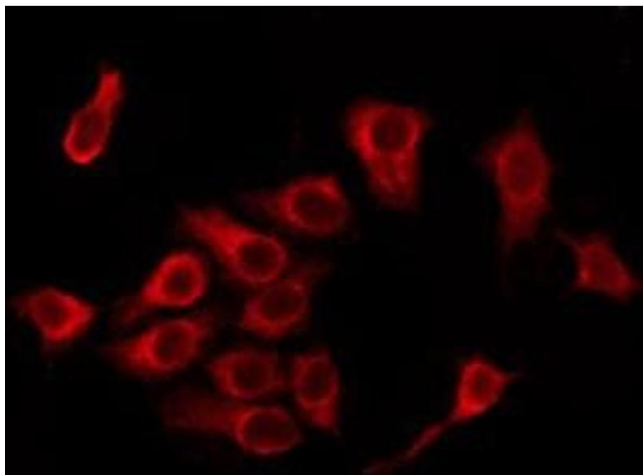
Preservative:	Sodium azide
---------------	--------------

Precaution of Use:	This product contains Sodium azide: a POISONOUS AND HAZARDOUS SUBSTANCE which should be handled by trained staff only.
--------------------	--

Storage:	-20 °C
----------	--------

Storage Comment:	Store at -20 °C. Stable for 12 months from date of receipt.
------------------	---

Expiry Date:	12 months
--------------	-----------



#### Immunofluorescence (fixed cells)

**Image 1.** ABIN6276266 staining MCF7 by IF/ICC. The sample were fixed with PFA and permeabilized in 0.1% Triton X-100, then blocked in 10% serum for 45 minutes at 25°C. The primary antibody was diluted at 1/200 and incubated with the sample for 1 hour at 37°C. An Alexa Fluor 594 conjugated goat anti-rabbit IgG (H+L) Ab, diluted at 1/600, was used as the secondary antibody