

Datasheet for ABIN6259442  
**anti-OR7E13P antibody**



[Go to Product page](#)

1 Image

### Overview

Quantity:	100 µL
Target:	OR7E13P
Reactivity:	Human
Host:	Rabbit
Clonality:	Polyclonal
Conjugate:	This OR7E13P antibody is un-conjugated
Application:	ELISA, Immunohistochemistry (IHC), Western Blotting (WB)

### Product Details

Immunogen:	A synthesized peptide
Isotype:	IgG
Specificity:	PJCG2 antibody detects endogenous levels of total PJCG2
Cross-Reactivity:	Human
Purification:	The antiserum was purified by peptide affinity chromatography using SulfoLink™ Coupling Resin (Thermo Fisher Scientific).

### Target Details

Target:	OR7E13P
Alternative Name:	PJCG2 ( <a href="#">OR7E13P Products</a> )
UniProt:	<a href="#">Q8WZ85</a>

## Application Details

---

Application Notes: WB 1:500-1:2000 IHC 1:50-1:200

---

Restrictions: For Research Use only

---

## Handling

---

Format: Liquid

---

Concentration: 1 mg/mL

---

Buffer: Rabbit IgG in phosphate buffered saline, pH 7.4, 150 mM NaCl, 0.02 % sodium azide and 50 % glycerol.

---

Preservative: Sodium azide

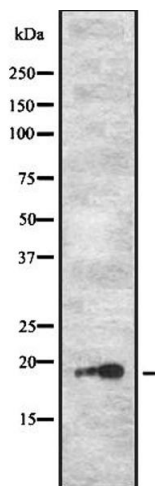
---

Precaution of Use: This product contains Sodium azide: a POISONOUS AND HAZARDOUS SUBSTANCE which should be handled by trained staff only.

---

## Images

---



### Western Blotting

**Image 1.** HL-60 cell lysate