



[Go to Product page](#)

Datasheet for ABIN6259452

## anti-SERINC2 antibody (Internal Region)

### 2 Images

#### Overview

Quantity:	100 µL
Target:	SERINC2
Binding Specificity:	Internal Region
Reactivity:	Human, Mouse, Rat
Host:	Rabbit
Clonality:	Polyclonal
Conjugate:	This SERINC2 antibody is un-conjugated
Application:	Western Blotting (WB), ELISA, Immunofluorescence (IF), Immunocytochemistry (ICC)

#### Product Details

Immunogen:	A synthesized peptide derived from human SERINC2, corresponding to a region within the internal amino acids.
Isotype:	IgG
Specificity:	SERINC2 Antibody detects endogenous levels of total SERINC2.
Predicted Reactivity:	Horse
Purification:	The antiserum was purified by peptide affinity chromatography using SulfoLink™ Coupling Resin (Thermo Fisher Scientific).

#### Target Details

Target:	SERINC2
---------	---------

## Target Details

---

Alternative Name: SERINC2 ([SERINC2 Products](#))

Background: Gene: SERINC2

Molecular Weight: 55 kDa

Gene ID: 347735

UniProt: [Q96SA4](#)

## Application Details

---

Application Notes: WB 1:500-1:1000, IF/ICC 1:100-1:500, ELISA(peptide) 1:20000-1:40000

Restrictions: For Research Use only

## Handling

---

Format: Liquid

Concentration: 1 mg/mL

Buffer: Rabbit IgG in phosphate buffered saline , pH 7.4, 150 mM NaCl, 0.02 % sodium azide and 50 % glycerol.

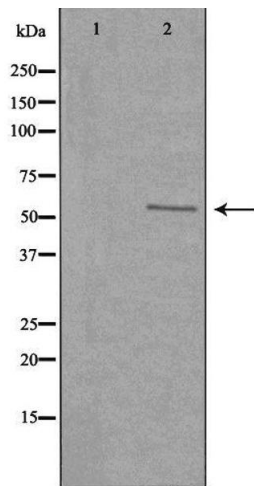
Preservative: Sodium azide

Precaution of Use: This product contains Sodium azide: a POISONOUS AND HAZARDOUS SUBSTANCE which should be handled by trained staff only.

Storage: -20 °C

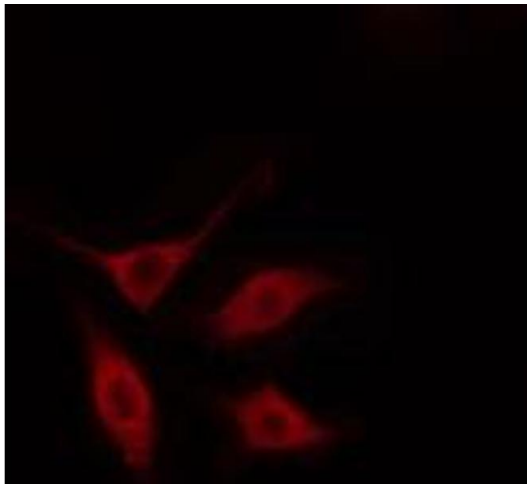
Storage Comment: Store at -20 °C. Stable for 12 months from date of receipt.

Expiry Date: 12 months



### Western Blotting

**Image 1.** Western blot analysis of extracts from HeLa cells, using SERC2 antibody. The lane on the left is treated with the antigen-specific peptide.



### Immunofluorescence (fixed cells)

**Image 2.** ABIN6274485 staining HeLa cells by IF/ICC. The sample were fixed with PFA and permeabilized in 0.1% Triton X-100, then blocked in 10% serum for 45 minutes at 25°C. The primary antibody was diluted at 1/200 and incubated with the sample for 1 hour at 37°C. An Alexa Fluor 594 conjugated goat anti-rabbit IgG (H+L) antibody (Cat.# S0006), diluted at 1/600, was used as secondary antibody.