



[Go to Product page](#)

Datasheet for ABIN6259478  
**anti-NLE1 antibody (Internal Region)**

2 Images

Overview

|                      |  |
|----------------------|--|
| Quantity:            | 100 µL   |
| Target:              | NLE1   |
| Binding Specificity: | Internal Region  |
| Reactivity:          | Human  |
| Host:                | Rabbit   |
| Clonality:           | Polyclonal   |
| Conjugate:           | This NLE1 antibody is un-conjugated  |
| Application:         | Western Blotting (WB), ELISA, Immunocytochemistry (ICC), Immunofluorescence (IF) |

Product Details

|                       |   |
|-----------------------|---|
| Immunogen:            | A synthesized peptide derived from human NLE1, corresponding to a region within the internal amino acids.                 |
| Isotype:              | IgG   |
| Specificity:          | NLE1 Antibody detects endogenous levels of total NLE1.  |
| Predicted Reactivity: | Pig,Bovine,Horse,Sheep,Rabbit,Dog   |
| Purification:         | The antiserum was purified by peptide affinity chromatography using SulfoLink™ Coupling Resin (Thermo Fisher Scientific). |

Target Details

|         |      |
|---------|------|
| Target: | NLE1 |
|---------|------|

## Target Details

---

|                   |  |
|-------------------|--|
| Alternative Name: | NLE1 ( <a href="#">NLE1 Products</a> )   |
| Background:       | Description: Plays a role in regulating Notch activity. Plays a role in regulating the expression of CDKN1A and several members of the Wnt pathway, probably via its effects on Notch activity.<br>Required during embryogenesis for inner mass cell survival (By similarity).<br>Gene: NLE1 |
| Molecular Weight: | 48 kDa   |
| Gene ID:          | 54475  |
| UniProt:          | <a href="#">Q9NVX2</a>   |

## Application Details

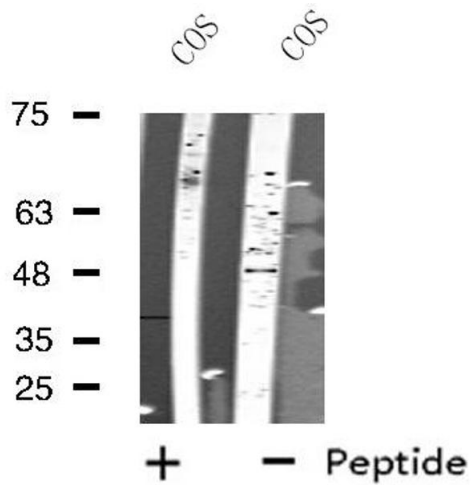
---

|                    |   |
|--------------------|---|
| Application Notes: | WB 1:500-1:1000, IF/ICC 1:100-1:500, ELISA(peptide) 1:20000-1:40000 |
| Restrictions:      | For Research Use only   |

## Handling

---

|                    |  |
|--------------------|--|
| Format:            | Liquid   |
| Concentration:     | 1 mg/mL  |
| Buffer:            | Rabbit IgG in phosphate buffered saline , pH 7.4, 150 mM NaCl, 0.02 % sodium azide and 50 % glycerol.                  |
| Preservative:      | Sodium azide   |
| Precaution of Use: | This product contains Sodium azide: a POISONOUS AND HAZARDOUS SUBSTANCE which should be handled by trained staff only. |
| Storage:           | -20 °C   |
| Storage Comment:   | Store at -20 °C. Stable for 12 months from date of receipt.  |
| Expiry Date:       | 12 months  |



#### Western Blotting

**Image 1.** Western blot analysis of extracts from COS cells, using NLE1 antibody.



#### Immunofluorescence (fixed cells)

**Image 2.** ABIN6275311 staining HepG2 by IF/ICC. The sample were fixed with PFA and permeabilized in 0.1% Triton X-100, then blocked in 10% serum for 45 minutes at 25°C. The primary antibody was diluted at 1/200 and incubated with the sample for 1 hour at 37°C. An Alexa Fluor 594 conjugated goat anti-rabbit IgG (H+L) Ab, diluted at 1/600, was used as the secondary antibody.