



Datasheet for ABIN625948
anti-SCUBE2 antibody (Internal Region)



[Go to Product page](#)

3 Images

Overview

Quantity:	0.05 mg
Target:	SCUBE2
Binding Specificity:	Internal Region
Reactivity:	Human, Rat
Host:	Rabbit
Clonality:	Polyclonal
Application:	ELISA, Western Blotting (WB), Immunohistochemistry (IHC), Immunocytochemistry (ICC), Immunohistochemistry (Paraffin-embedded Sections) (IHC (p))

Product Details

Brand:	IHC-plus™
Isotype:	IgG
Purification:	Immunoaffinity purified

Target Details

Target:	SCUBE2
Alternative Name:	SCUBE2 (SCUBE2 Products)
Background:	Name/Gene ID: SCUBE2 Synonyms: SCUBE2, CEGB1, CEGF1, CEGP1, Protein CEGP1
Gene ID:	57758

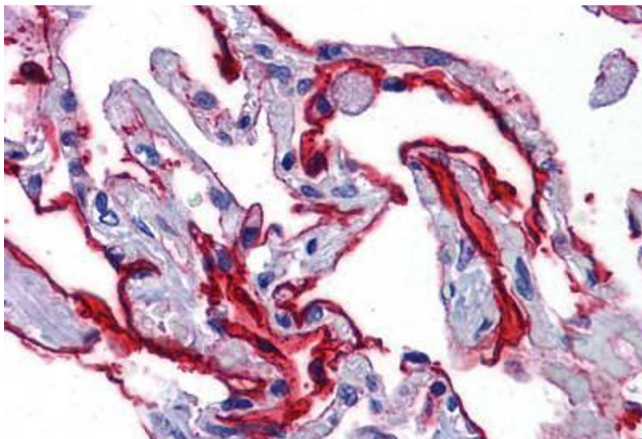
Application Details

Application Notes:	Approved: ELISA, ICC, IHC, IHC-P (5 µg/mL), WB (1 - 2 µg/mL)
	Usage: SCUBE2 antibody can be used for detection of SCUBE2 by Western blot at 1-2 µg/mL.
Comment:	Target Species of Antibody: Human
Restrictions:	For Research Use only

Handling

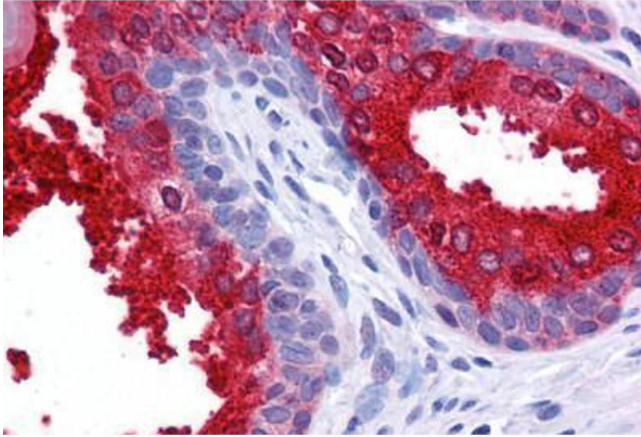
Format:	Liquid
Concentration:	Lot specific
Buffer:	PBS, 0.02 % sodium azide
Preservative:	Sodium azide
Precaution of Use:	This product contains Sodium azide: a POISONOUS AND HAZARDOUS SUBSTANCE which should be handled by trained staff only.
Handling Advice:	avoid freeze thaw cycles. Store undiluted.
Storage:	4 °C, -20 °C
Storage Comment:	Store at 4°C for 3 months and -20°C, stable for up to 1 year. Avoid repeated freeze-thaw cycles.
Expiry Date:	12 months

Images



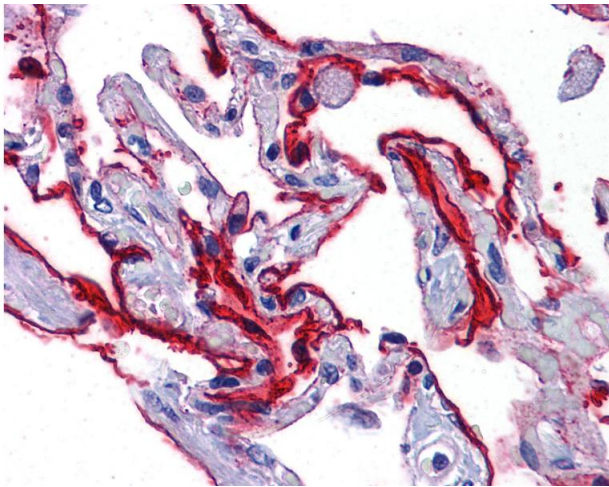
Immunohistochemistry (Formalin-fixed Paraffin-embedded Sections)

Image 1. Human Lung: Formalin-Fixed, Paraffin-Embedded (FFPE)



Immunohistochemistry (Formalin-fixed Paraffin-embedded Sections)

Image 2. Human Prostate: Formalin-Fixed, Paraffin-Embedded (FFPE)



Immunohistochemistry

Image 3. Anti-SCUBE2 antibody IHC of human lung. Immunohistochemistry of formalin-fixed, paraffin-embedded tissue after heat-induced antigen retrieval. Antibody concentration 5 ug/ml.