

Datasheet for ABIN6259481  
**anti-SRMS antibody (C-Term)**[Go to Product page](#)

## 2 Images

## Overview

Quantity:	100 µL
Target:	SRMS
Binding Specificity:	C-Term
Reactivity:	Human, Rat
Host:	Rabbit
Clonality:	Polyclonal
Conjugate:	This SRMS antibody is un-conjugated
Application:	Western Blotting (WB), ELISA, Immunohistochemistry (IHC)

## Product Details

Immunogen:	A synthesized peptide derived from human SRMS, corresponding to a region within C-terminal amino acids.
Isotype:	IgG
Specificity:	SRMS Antibody detects endogenous levels of total SRMS.
Predicted Reactivity:	Pig,Bovine,Horse,Sheep
Purification:	The antiserum was purified by peptide affinity chromatography using SulfoLink™ Coupling Resin (Thermo Fisher Scientific).

## Target Details

Target:	SRMS
---------	------

## Target Details

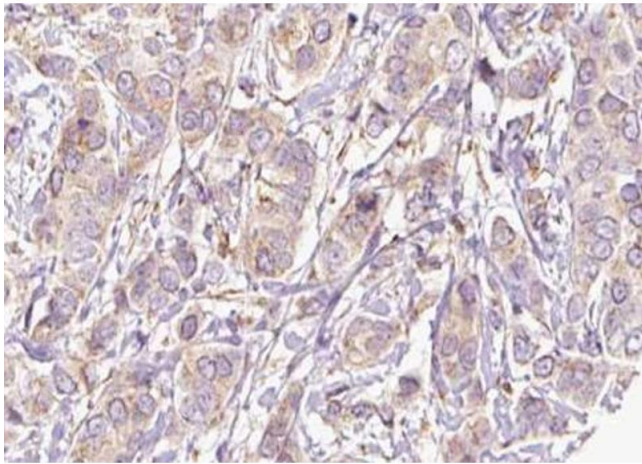
Alternative Name:	SRMS ( <a href="#">SRMS Products</a> )
Background:	Description: Non-receptor tyrosine-protein kinase which phosphorylates DOK1 on tyrosine residues (PubMed:23822091). Also phosphorylates KHDRBS1/SAM68 and VIM on tyrosine residues (PubMed:29496907). Phosphorylation of KHDRBS1 is EGF-dependent (PubMed:29496907). Gene: SRMS
Molecular Weight:	65 kDa,
Gene ID:	6725
UniProt:	<a href="#">Q9H3Y6</a>

## Application Details

Application Notes:	WB 1:500-1:2000, IHC 1:50-1:200, ELISA(peptide) 1:20000-1:40000
Restrictions:	For Research Use only

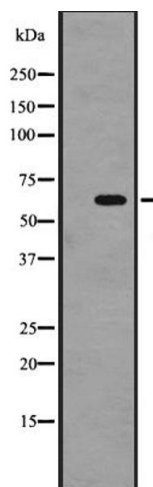
## Handling

Format:	Liquid
Concentration:	1 mg/mL
Buffer:	Rabbit IgG in phosphate buffered saline, pH 7.4, 150 mM NaCl, 0.02 % sodium azide and 50 % glycerol.
Preservative:	Sodium azide
Precaution of Use:	This product contains Sodium azide: a POISONOUS AND HAZARDOUS SUBSTANCE which should be handled by trained staff only.
Storage:	-20 °C
Expiry Date:	12 months



### Immunohistochemistry

**Image 1.** ABIN6273812 at 1/100 staining Human breast cancer tissue by IHC-P. The sample was formaldehyde fixed and a heat mediated antigen retrieval step in citrate buffer was performed. The sample was then blocked and incubated with the antibody for 1.5 hours at 22°C. An HRP conjugated goat anti-rabbit antibody was used as the secondary.



### Western Blotting

**Image 2.** Western blot analysis of SRMS expression in A431 whole cell lysate. The lane on the left is treated with the antigen-specific peptide.