

Datasheet for ABIN6259486
anti-PIK3C2B antibody (Internal Region)[Go to Product page](#)

2 Images

Overview

Quantity:	100 µL
Target:	PIK3C2B
Binding Specificity:	Internal Region
Reactivity:	Human, Mouse
Host:	Rabbit
Clonality:	Polyclonal
Conjugate:	This PIK3C2B antibody is un-conjugated
Application:	Western Blotting (WB), Immunohistochemistry (IHC), ELISA

Product Details

Immunogen:	A synthesized peptide derived from human PIK3C2B, corresponding to a region within the internal amino acids.
Isotype:	IgG
Specificity:	PIK3C2B Antibody detects endogenous levels of total PIK3C2B.
Predicted Reactivity:	Pig,Horse,Sheep,Rabbit,Dog
Purification:	The antiserum was purified by peptide affinity chromatography using SulfoLink™ Coupling Resin (Thermo Fisher Scientific).

Target Details

Target:	PIK3C2B
---------	---------

Target Details

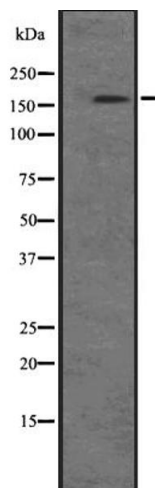
Alternative Name:	PIK3C2B (PIK3C2B Products)
Background:	Description: Phosphorylates PtdIns and PtdIns4P with a preference for PtdIns. Does not phosphorylate PtdIns(4,5)P2. May be involved in EGF and PDGF signaling cascades. Gene: PIK3C2B
Molecular Weight:	185 kDa
Gene ID:	5287
UniProt:	O00750
Pathways:	Inositol Metabolic Process

Application Details

Application Notes:	WB 1:500-1:2000, IHC 1:50-1:200, ELISA(peptide) 1:20000-1:40000
Restrictions:	For Research Use only

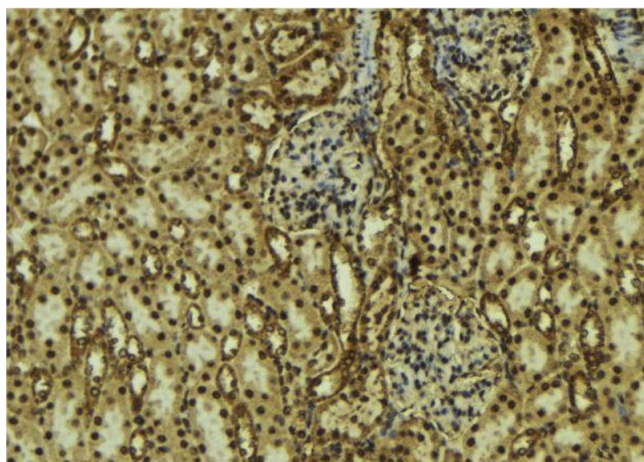
Handling

Format:	Liquid
Concentration:	1 mg/mL
Buffer:	Rabbit IgG in phosphate buffered saline, pH 7.4, 150 mM NaCl, 0.02 % sodium azide and 50 % glycerol.
Preservative:	Sodium azide
Precaution of Use:	This product contains Sodium azide: a POISONOUS AND HAZARDOUS SUBSTANCE which should be handled by trained staff only.
Storage:	-20 °C
Expiry Date:	12 months



Western Blotting

Image 1. Western blot analysis of PIK3C2B expression in A-431 cell lysate at 25ug/lane. The lane on the left is treated with the antigen-specific peptide.



Immunohistochemistry

Image 2. ABIN6273754 at 1/100 staining Mouse kidney tissue by IHC-P. The sample was formaldehyde fixed and a heat mediated antigen retrieval step in citrate buffer was performed. The sample was then blocked and incubated with the antibody for 1.5 hours at 22°C. An HRP conjugated goat anti-rabbit antibody was used as the secondary.