



[Go to Product page](#)

Datasheet for ABIN6259502

anti-CEP95 antibody (Internal Region)

2 Images

Overview

Quantity:	100 µL
Target:	CEP95
Binding Specificity:	Internal Region
Reactivity:	Human, Mouse, Rat
Host:	Rabbit
Clonality:	Polyclonal
Conjugate:	This CEP95 antibody is un-conjugated
Application:	ELISA, Western Blotting (WB), Immunocytochemistry (ICC), Immunofluorescence (IF)

Product Details

Immunogen:	A synthesized peptide derived from human CCDC45, corresponding to a region within the internal amino acids.
Isotype:	IgG
Specificity:	CCDC45 Antibody detects endogenous levels of total CCDC45.
Predicted Reactivity:	Pig,Bovine,Horse,Sheep,Rabbit,Dog
Purification:	The antiserum was purified by peptide affinity chromatography using SulfoLink™ Coupling Resin (Thermo Fisher Scientific).

Target Details

Target:	CEP95
---------	-------

Target Details

Alternative Name: CEP95 ([CEP95 Products](#))

Background: Gene: CEP95

Molecular Weight: 95 kDa

Gene ID: 90799

UniProt: [Q96GE4](#)

Application Details

Application Notes: WB 1:500-1:1000, IF/ICC 1:100-1:500, ELISA(peptide) 1:20000-1:40000

Restrictions: For Research Use only

Handling

Format: Liquid

Concentration: 1 mg/mL

Buffer: Rabbit IgG in phosphate buffered saline , pH 7.4, 150 mM NaCl, 0.02 % sodium azide and 50 % glycerol.

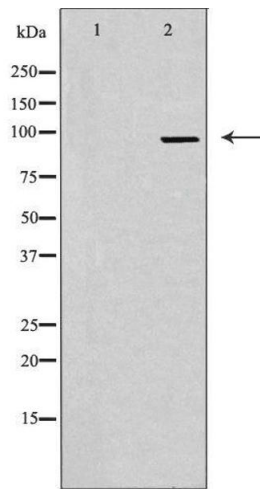
Preservative: Sodium azide

Precaution of Use: This product contains Sodium azide: a POISONOUS AND HAZARDOUS SUBSTANCE which should be handled by trained staff only.

Storage: -20 °C

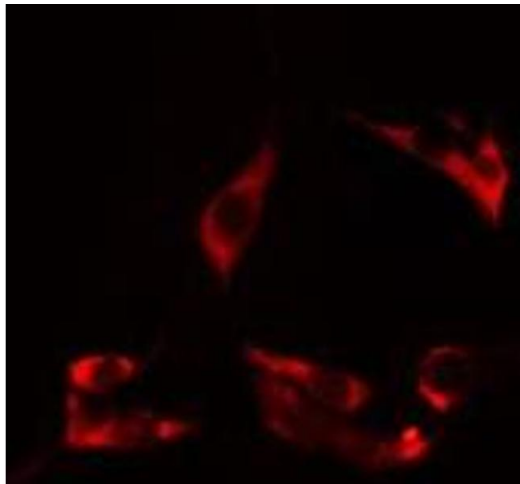
Storage Comment: Store at -20 °C. Stable for 12 months from date of receipt.

Expiry Date: 12 months



Western Blotting

Image 1. Western blot analysis of extracts from HuvEc cells, using CCDC45 antibody. The lane on the left is treated with the antigen-specific peptide.



Immunofluorescence (fixed cells)

Image 2. ABIN6275027 staining HuvEc cells by IF/ICC. The sample were fixed with PFA and permeabilized in 0.1% Triton X-100, then blocked in 10% serum for 45 minutes at 25°C. The primary antibody was diluted at 1/200 and incubated with the sample for 1 hour at 37°C. An Alexa Fluor 594 conjugated goat anti-rabbit IgG (H+L) antibody (Cat.# S0006), diluted at 1/600, was used as secondary antibody