

Datasheet for ABIN6259503  
**anti-OR5AN1 antibody (Internal Region)**[Go to Product page](#)

## 3 Images

## Overview

Quantity:	100 µL
Target:	OR5AN1
Binding Specificity:	Internal Region
Reactivity:	Human
Host:	Rabbit
Clonality:	Polyclonal
Conjugate:	This OR5AN1 antibody is un-conjugated
Application:	Western Blotting (WB), ELISA, Immunofluorescence (IF), Immunohistochemistry (IHC), Immunocytochemistry (ICC)

## Product Details

Immunogen:	A synthesized peptide derived from human OR5AN1, corresponding to a region within the internal amino acids.
Isotype:	IgG
Specificity:	OR5AN1 Antibody detects endogenous levels of total OR5AN1.
Purification:	The antiserum was purified by peptide affinity chromatography using SulfoLink™ Coupling Resin (Thermo Fisher Scientific).

## Target Details

Target:	OR5AN1
Alternative Name:	OR5AN1 ( <a href="#">OR5AN1 Products</a> )

## Target Details

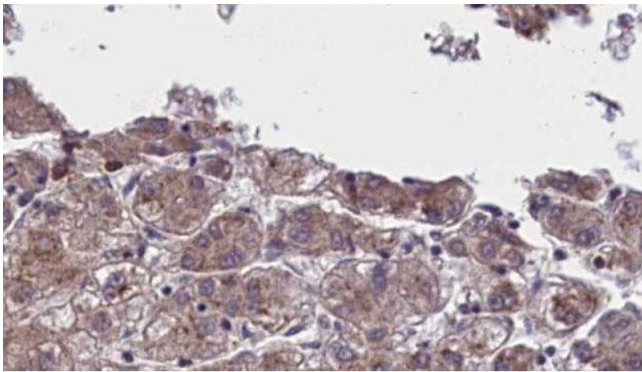
Background:	Description: Odorant receptor involved in the detection of muscone. Gene: OR5AN1
Molecular Weight:	35 kDa
Gene ID:	390195
UniProt:	<a href="#">Q8NGI8</a>

## Application Details

Application Notes:	WB 1:500-1:2000, IHC 1:50-1:200, IF/ICC 1:100-1:500, ELISA(peptide) 1:20000-1:40000
Restrictions:	For Research Use only

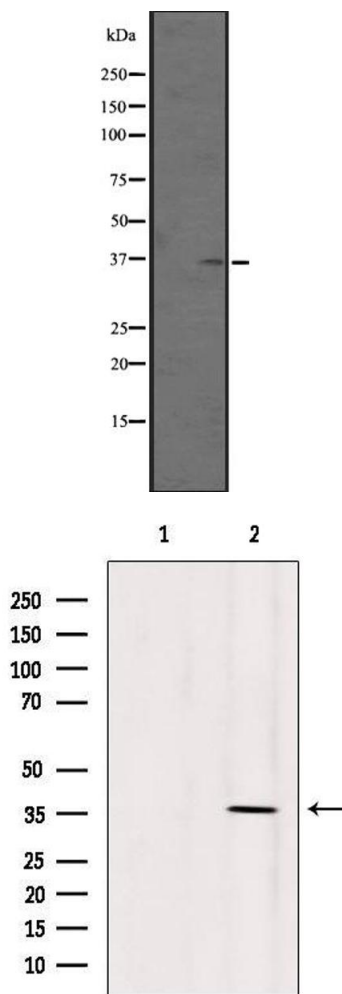
## Handling

Format:	Liquid
Concentration:	1 mg/mL
Buffer:	Rabbit IgG in phosphate buffered saline, pH 7.4, 150 mM NaCl, 0.02 % sodium azide and 50 % glycerol.
Preservative:	Sodium azide
Precaution of Use:	This product contains Sodium azide: a POISONOUS AND HAZARDOUS SUBSTANCE which should be handled by trained staff only.
Storage:	-20 °C
Expiry Date:	12 months



### Immunohistochemistry

**Image 1.** ABIN6273960 at 1/100 staining Human liver cancer tissue by IHC-P. The sample was formaldehyde fixed and a heat mediated antigen retrieval step in citrate buffer was performed. The sample was then blocked and incubated with the antibody for 1.5 hours at 22°C. An HRP conjugated goat anti-rabbit antibody was used as the secondary.



### Western Blotting

**Image 2.** Western blot analysis of OR5AN1 expression in Human placenta tissue lysates ,The lane on the left is treated with the antigen-specific peptide.

### Western Blotting

**Image 3.** Western blot analysis of extracts from 293, using OR5AN1 Antibody. Lane 1 was treated with the blocking peptide.