

Datasheet for ABIN6259504  
**anti-MCF2 antibody (Internal Region)**



[Go to Product page](#)

1 Image

## Overview

Quantity:	100 µL
Target:	MCF2
Binding Specificity:	Internal Region
Reactivity:	Human, Mouse
Host:	Rabbit
Clonality:	Polyclonal
Conjugate:	This MCF2 antibody is un-conjugated
Application:	Western Blotting (WB), ELISA

## Product Details

Immunogen:	A synthesized peptide derived from human MCF2, corresponding to a region within the internal amino acids.
Isotype:	IgG
Specificity:	MCF2 Antibody detects endogenous levels of total MCF2.
Predicted Reactivity:	Pig,Bovine,Horse,Sheep,Rabbit,Dog
Purification:	The antiserum was purified by peptide affinity chromatography using SulfoLink™ Coupling Resin (Thermo Fisher Scientific).

## Target Details

Target:	MCF2
---------	------

## Target Details

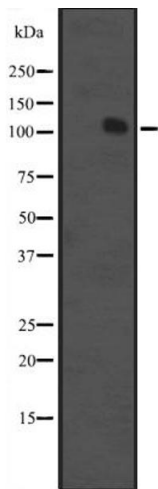
Alternative Name:	MCF2 ( <a href="#">MCF2 Products</a> )
Background:	<p>Description: Guanine nucleotide exchange factor (GEF) that modulates the Rho family of GTPases. Promotes the conversion of some member of the Rho family GTPase from the GDP-bound to the GTP-bound form. Isoform 1 exhibits no activity toward RHOA, RAC1 or CDC42. Isoform 2 exhibits decreased GEF activity toward CDC42. Isoform 3 exhibits a weak but significant activity toward RAC1 and CDC42. Isoform 4 exhibits significant activity toward RHOA and CDC42. The truncated DBL oncogene is active toward RHOA, RAC1 and CDC42.</p> <p>Gene: MCF2</p>
Molecular Weight:	108 kDa
Gene ID:	4168
UniProt:	<a href="#">P10911</a>

## Application Details

Application Notes:	WB 1:500-1:2000, ELISA(peptide) 1:20000-1:40000
Restrictions:	For Research Use only

## Handling

Format:	Liquid
Concentration:	1 mg/mL
Buffer:	Rabbit IgG in phosphate buffered saline, pH 7.4, 150 mM NaCl, 0.02 % sodium azide and 50 % glycerol.
Preservative:	Sodium azide
Precaution of Use:	This product contains Sodium azide: a POISONOUS AND HAZARDOUS SUBSTANCE which should be handled by trained staff only.
Storage:	-20 °C
Expiry Date:	12 months



Western Blotting

**Image 1.** Western blot analysis of MCF2 expression in K562 cell line lysate ;,The lane on the left is treated with the antigen-specific peptide.