

Datasheet for ABIN6259510

**anti-OR1L1 antibody**

3 Images

[Go to Product page](#)

## Overview

Quantity:	100 µL
Target:	OR1L1
Reactivity:	Human, Mouse
Host:	Rabbit
Clonality:	Polyclonal
Conjugate:	This OR1L1 antibody is un-conjugated
Application:	Western Blotting (WB), ELISA, Immunohistochemistry (IHC)

## Product Details

Immunogen:	A synthesized peptide
Isotype:	IgG
Specificity:	OR1L1 antibody detects endogenous levels of total OR1L1
Cross-Reactivity:	Human, Mouse (Murine)
Purification:	The antiserum was purified by peptide affinity chromatography using SulfoLink™ Coupling Resin (Thermo Fisher Scientific).

## Target Details

Target:	OR1L1
Alternative Name:	OR1L1 ( <a href="#">OR1L1 Products</a> )
Background:	Description: Odorant receptor.

## Target Details

	Gene: OR1L1
Molecular Weight:	41 kDa
Gene ID:	26737
UniProt:	<a href="#">Q8NH94</a>

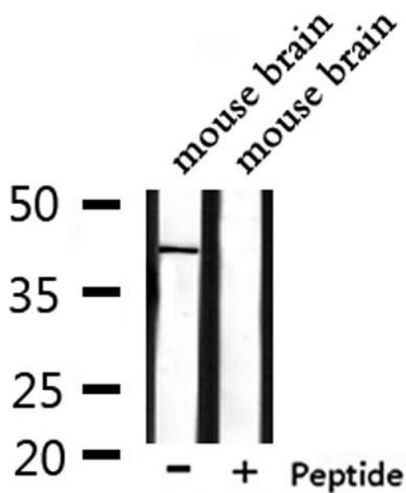
## Application Details

Application Notes:	WB 1:500-1:2000 IHC 1:50-1:200
Restrictions:	For Research Use only

## Handling

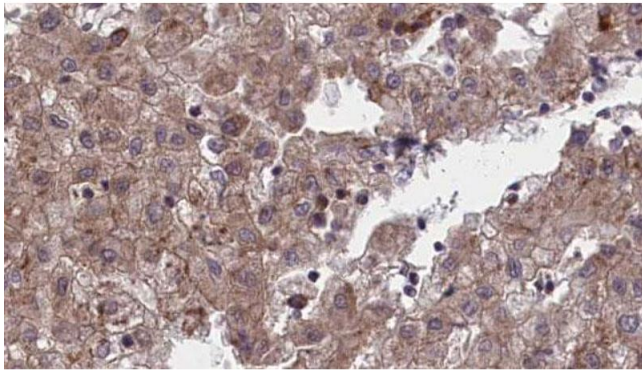
Format:	Liquid
Concentration:	1 mg/mL
Buffer:	Rabbit IgG in phosphate buffered saline, pH 7.4, 150 mM NaCl, 0.02 % sodium azide and 50 % glycerol.
Preservative:	Sodium azide
Precaution of Use:	This product contains Sodium azide: a POISONOUS AND HAZARDOUS SUBSTANCE which should be handled by trained staff only.

## Images



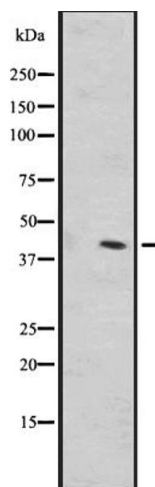
### Western Blotting

**Image 1.** Western blot analysis of extracts from mouse brain, using OR1L1 Antibody.



### Immunohistochemistry

**Image 2.** ABIN6273972 at 1/100 staining Human liver cancer tissue by IHC-P. The sample was formaldehyde fixed and a heat mediated antigen retrieval step in citrate buffer was performed. The sample was then blocked and incubated with the antibody for 1.5 hours at 22°C. An HRP conjugated goat anti-rabbit antibody was used as the secondary.



### Western Blotting

**Image 3.** Western blot analysis of OR1L1 expression in A549 whole cell lysate ,The lane on the left is treated with the antigen-specific peptide.