



[Go to Product page](#)

Datasheet for ABIN6259518  
**anti-CLCN7 antibody (N-Term)**

2 Images

Overview

|                      |  |
|----------------------|--|
| Quantity:            | 100 µL   |
| Target:              | CLCN7  |
| Binding Specificity: | N-Term   |
| Reactivity:          | Human, Rat, Mouse  |
| Host:                | Rabbit   |
| Clonality:           | Polyclonal   |
| Conjugate:           | This CLCN7 antibody is un-conjugated   |
| Application:         | Western Blotting (WB), ELISA, Immunohistochemistry (IHC), Immunofluorescence (IF), Immunocytochemistry (ICC) |

Product Details

|                       |   |
|-----------------------|---|
| Immunogen:            | A synthesized peptide derived from human CLCN7, corresponding to a region within N-terminal amino acids.                  |
| Isotype:              | IgG   |
| Specificity:          | CLCN7 Antibody detects endogenous levels of total CLCN7.  |
| Predicted Reactivity: | Bovine,Rabbit   |
| Purification:         | The antiserum was purified by peptide affinity chromatography using SulfoLink™ Coupling Resin (Thermo Fisher Scientific). |

Target Details

|         |       |
|---------|-------|
| Target: | CLCN7 |
|---------|-------|

## Target Details

---

|                   |   |
|-------------------|---|
| Alternative Name: | CLCN7 ( <a href="#">CLCN7 Products</a> )  |
| Background:       | Description: Slowly voltage-gated channel mediating the exchange of chloride ions against protons. Functions as antiporter and contributes to the acidification of the lysosome lumen.<br>Gene: CLCN7 |
| Molecular Weight: | 89 kDa  |
| Gene ID:          | 1186  |
| UniProt:          | <a href="#">P51798</a>  |

## Application Details

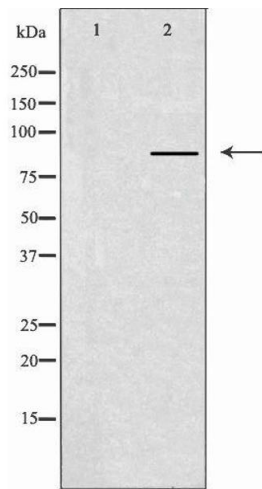
---

|                    |   |
|--------------------|---|
| Application Notes: | WB 1:500-1:1000, IF/ICC 1:100-1:500, IHC 1:50-1:200, ELISA(peptide) 1:20000-1:40000 |
| Restrictions:      | For Research Use only   |

## Handling

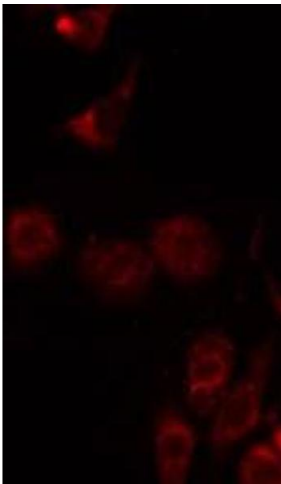
---

|                    |  |
|--------------------|--|
| Format:            | Liquid   |
| Concentration:     | 1 mg/mL  |
| Buffer:            | Rabbit IgG in phosphate buffered saline , pH 7.4, 150 mM NaCl, 0.02 % sodium azide and 50 % glycerol.                  |
| Preservative:      | Sodium azide   |
| Precaution of Use: | This product contains Sodium azide: a POISONOUS AND HAZARDOUS SUBSTANCE which should be handled by trained staff only. |
| Storage:           | -20 °C   |
| Storage Comment:   | Store at -20 °C. Stable for 12 months from date of receipt.  |
| Expiry Date:       | 12 months  |



### Western Blotting

**Image 1.** Western blot analysis of extracts from A549 cells using CLCN7 antibody. The lane on the left is treated with the antigen-specific peptide.



### Immunofluorescence (fixed cells)

**Image 2.** ABIN6275003 staining A549 by IF/ICC. The sample were fixed with PFA and permeabilized in 0.1% Triton X-100, then blocked in 10% serum for 45 minutes at 25°C. The primary antibody was diluted at 1/200 and incubated with the sample for 1 hour at 37°C. An Alexa Fluor 594 conjugated goat anti-rabbit IgG (H+L) Ab, diluted at 1/600, was used as the secondary antibody.