

Datasheet for ABIN6259526
anti-OR2A12 antibody (C-Term)[Go to Product page](#)

2 Images

Overview

Quantity:	100 µL
Target:	OR2A12
Binding Specificity:	C-Term
Reactivity:	Human
Host:	Rabbit
Clonality:	Polyclonal
Conjugate:	This OR2A12 antibody is un-conjugated
Application:	Western Blotting (WB), ELISA, Immunohistochemistry (IHC)

Product Details

Immunogen:	A synthesized peptide derived from human OR2A12, corresponding to a region within C-terminal amino acids.
Isotype:	IgG
Specificity:	OR2A12 Antibody detects endogenous levels of total OR2A12.
Predicted Reactivity:	Bovine,Dog
Purification:	The antiserum was purified by peptide affinity chromatography using SulfoLink™ Coupling Resin (Thermo Fisher Scientific).

Target Details

Target:	OR2A12
---------	--------

Target Details

Alternative Name:	OR2A12 (OR2A12 Products)
-------------------	--

Background:	Description: Odorant receptor. Gene: OR2A12
-------------	--

Molecular Weight:	35 kDa
-------------------	--------

Gene ID:	346525
----------	--------

UniProt:	Q8NGT7
----------	------------------------

Application Details

Application Notes:	WB 1:500-1:2000, IHC 1:50-1:200, ELISA(peptide) 1:20000-1:40000
--------------------	---

Restrictions:	For Research Use only
---------------	-----------------------

Handling

Format:	Liquid
---------	--------

Concentration:	1 mg/mL
----------------	---------

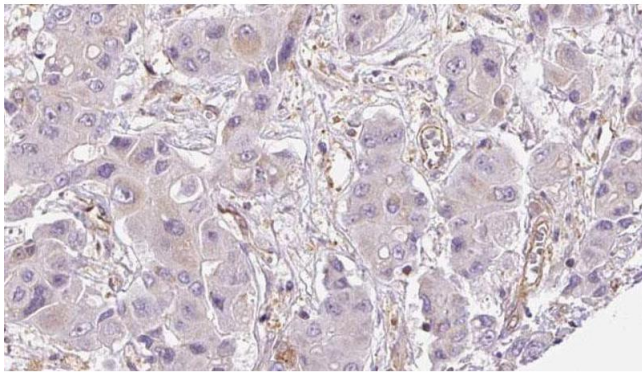
Buffer:	Rabbit IgG in phosphate buffered saline, pH 7.4, 150 mM NaCl, 0.02 % sodium azide and 50 % glycerol.
---------	--

Preservative:	Sodium azide
---------------	--------------

Precaution of Use:	This product contains Sodium azide: a POISONOUS AND HAZARDOUS SUBSTANCE which should be handled by trained staff only.
--------------------	--

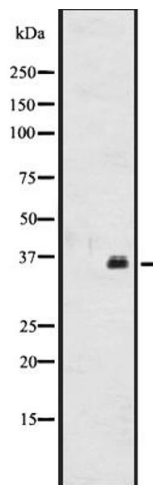
Storage:	-20 °C
----------	--------

Expiry Date:	12 months
--------------	-----------



Immunohistochemistry

Image 1. ABIN6273954 at 1/100 staining Human liver cancer tissue by IHC-P. The sample was formaldehyde fixed and a heat mediated antigen retrieval step in citrate buffer was performed. The sample was then blocked and incubated with the antibody for 1.5 hours at 22°C. An HRP conjugated goat anti-rabbit antibody was used as the secondary.



Western Blotting

Image 2. Western blot analysis of OR2A12 expression in CEM cell line lysates. The lane on the left is treated with the antigen-specific peptide.