

Datasheet for ABIN6259536

**anti-WEE2 antibody**

3 Images

[Go to Product page](#)

## Overview

Quantity:	100 µL
Target:	WEE2
Reactivity:	Human, Mouse
Host:	Rabbit
Clonality:	Polyclonal
Conjugate:	This WEE2 antibody is un-conjugated
Application:	Western Blotting (WB), ELISA, Immunofluorescence (IF), Immunocytochemistry (ICC)

## Product Details

Immunogen:	A synthesized peptide
Isotype:	IgG
Specificity:	WEE2 Antibody detects endogenous levels of total WEE2
Cross-Reactivity:	Human, Mouse (Murine)
Purification:	The antiserum was purified by peptide affinity chromatography using SulfoLink™ Coupling Resin (Thermo Fisher Scientific).

## Target Details

Target:	WEE2
Alternative Name:	WEE2 ( <a href="#">WEE2 Products</a> )
Background:	Description: Oocyte-specific protein tyrosine kinase that phosphorylates and inhibits CDK1 and

## Target Details

acts as a key regulator of meiosis during both prophase I and metaphase II. Required to maintain meiotic arrest in oocytes during the germinal vesicle (GV) stage, a long period of quiescence at dictyate prophase I, by phosphorylating CDK1 at 'Tyr-15', leading to inhibit CDK1 activity and prevent meiotic reentry. Also required for metaphase II exit during egg activation by phosphorylating CDK1 at 'Tyr-15', to ensure exit from meiosis in oocytes and promote pronuclear formation (By similarity).

Gene: WEE2

Molecular Weight: 60 kDa

Gene ID: 494551

UniProt: [P0C1S8](#)

Pathways: [M Phase](#)

## Application Details

Application Notes: WB 1:500~1:1000, IF/ICC 1:100-1:500

Restrictions: For Research Use only

## Handling

Format: Liquid

Concentration: 1 mg/mL

Buffer: Rabbit IgG in phosphate buffered saline , pH 7.4, 150 mM NaCl, 0.02 % sodium azide and 50 % glycerol.

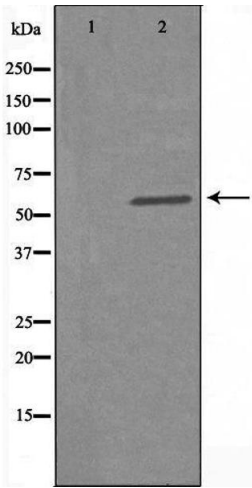
Preservative: Sodium azide

Precaution of Use: This product contains Sodium azide: a POISONOUS AND HAZARDOUS SUBSTANCE which should be handled by trained staff only.

Storage: -20 °C

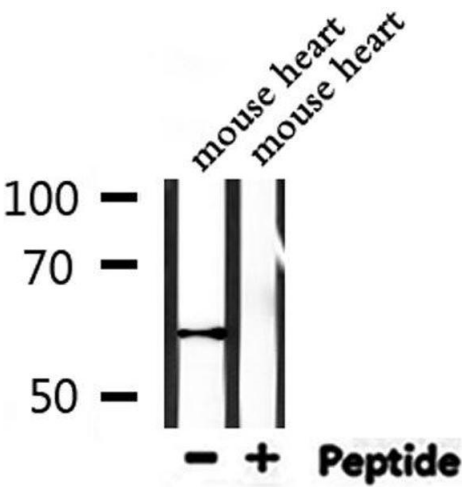
Storage Comment: Store at -20 °C.Stable for 12 months from date of receipt

Expiry Date: 12 months



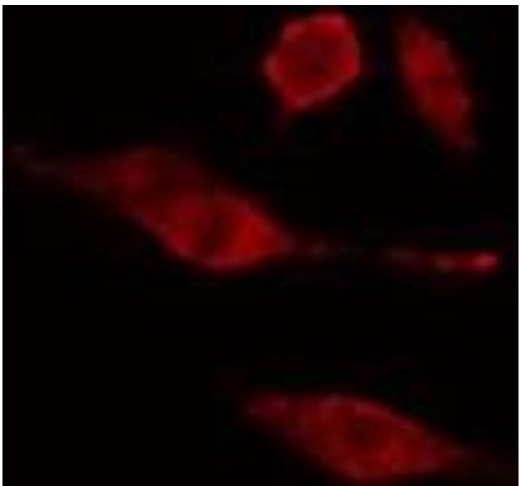
Western Blotting

**Image 1.** Western blot analysis of extracts from HuvEc cells, using WEE2 antibody. The lane on the left is treated with the antigen-specific peptide.



Western Blotting

**Image 2.** Western blot analysis of extracts from mouse heart, using WEE2 Antibody.



Immunofluorescence (fixed cells)

**Image 3.** ABIN6275681 staining HuvEc cells by IF/ICC. The sample were fixed with PFA and permeabilized in 0.1% Triton X-100, then blocked in 10% serum for 45 minutes at 25°C. The primary antibody was diluted at 1/200 and incubated with the sample for 1 hour at 37°C. An Alexa Fluor 594 conjugated goat anti-rabbit IgG (H+L) antibody (Cat.# S0006), diluted at 1/600, was used as secondary antibody