



[Go to Product page](#)

Datasheet for ABIN6259544
anti-OR7E24 antibody

3 Images

Overview

Quantity:	100 µL
Target:	OR7E24
Reactivity:	Human
Host:	Rabbit
Clonality:	Polyclonal
Conjugate:	This OR7E24 antibody is un-conjugated
Application:	Western Blotting (WB), ELISA, Immunohistochemistry (IHC)

Product Details

Immunogen:	A synthesized peptide
Isotype:	IgG
Specificity:	OR7E24 antibody detects endogenous levels of total OR7E24
Cross-Reactivity:	Human
Purification:	The antiserum was purified by peptide affinity chromatography using SulfoLink™ Coupling Resin (Thermo Fisher Scientific).

Target Details

Target:	OR7E24
Alternative Name:	OR7E24 (OR7E24 Products)
Background:	Description: Odorant receptor.

Target Details

	Gene: OR7E24
Molecular Weight:	38 kDa
Gene ID:	26648
UniProt:	Q6IFN5

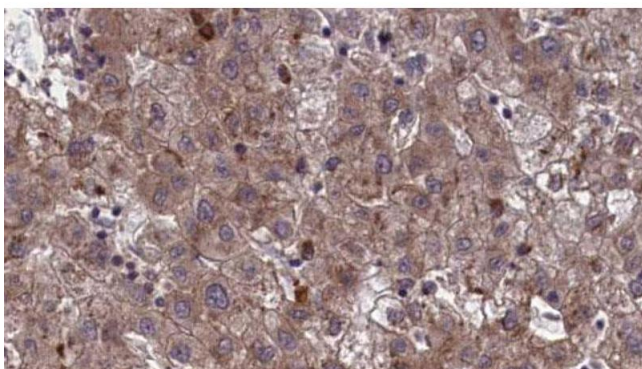
Application Details

Application Notes:	WB 1:500-1:2000 IHC 1:50-1:200
Restrictions:	For Research Use only

Handling

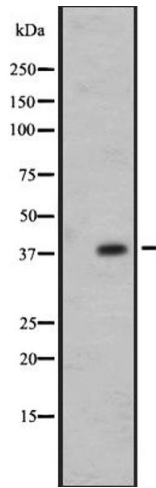
Format:	Liquid
Concentration:	1 mg/mL
Buffer:	Rabbit IgG in phosphate buffered saline, pH 7.4, 150 mM NaCl, 0.02 % sodium azide and 50 % glycerol.
Preservative:	Sodium azide
Precaution of Use:	This product contains Sodium azide: a POISONOUS AND HAZARDOUS SUBSTANCE which should be handled by trained staff only.

Images



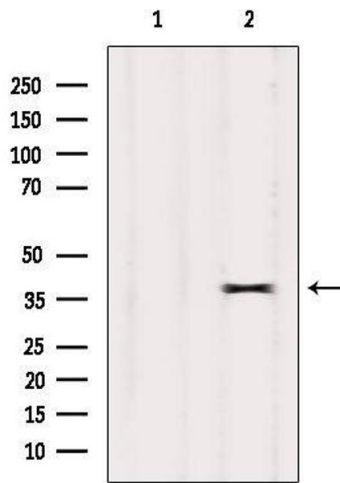
Immunohistochemistry

Image 1. ABIN6273963 at 1/100 staining Human liver cancer tissue by IHC-P. The sample was formaldehyde fixed and a heat mediated antigen retrieval step in citrate buffer was performed. The sample was then blocked and incubated with the antibody for 1.5 hours at 22°C. An HRP conjugated goat anti-rabbit antibody was used as the secondary.



Western Blotting

Image 2. Western blot analysis of OR7E24 expression in 721_B whole cell lysate. The lane on the left is treated with the antigen-specific peptide.



Western Blotting

Image 3. Western blot analysis of extracts from Mouse brain, using OR7E24 Antibody. The lane on the left was treated with blocking peptide.