



[Go to Product page](#)

Datasheet for ABIN6259551

anti-ATG16L2 antibody (Internal Region)

3 Images

Overview

Quantity:	100 µL
Target:	ATG16L2
Binding Specificity:	Internal Region
Reactivity:	Human, Mouse, Rat
Host:	Rabbit
Clonality:	Polyclonal
Conjugate:	This ATG16L2 antibody is un-conjugated
Application:	ELISA, Western Blotting (WB), Immunofluorescence (IF), Immunocytochemistry (ICC)

Product Details

Immunogen:	A synthesized peptide derived from human ATG16L2, corresponding to a region within the internal amino acids.
Isotype:	IgG
Specificity:	ATG16L2 Antibody detects endogenous levels of total ATG16L2.
Predicted Reactivity:	Bovine, Sheep, Rabbit
Purification:	The antiserum was purified by peptide affinity chromatography using SulfoLink™ Coupling Resin (Thermo Fisher Scientific).

Target Details

Target:	ATG16L2
---------	---------

Target Details

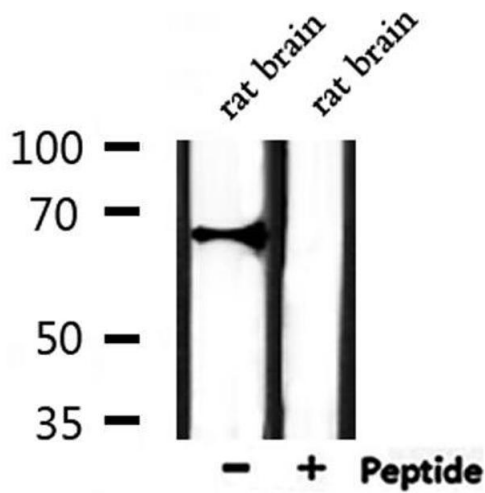
Alternative Name:	ATG16L2 (ATG16L2 Products)
Background:	Description: May play a role in autophagy. Gene: ATG16L2
Molecular Weight:	69 kDa
Gene ID:	89849
UniProt:	Q8NAA4

Application Details

Application Notes:	WB 1:500-1:1000, IF/ICC 1:100-1:500, ELISA(peptide) 1:20000-1:40000
Restrictions:	For Research Use only

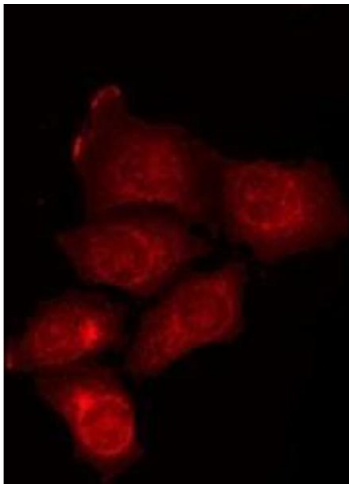
Handling

Format:	Liquid
Concentration:	1 mg/mL
Buffer:	Rabbit IgG in phosphate buffered saline , pH 7.4, 150 mM NaCl, 0.02 % sodium azide and 50 % glycerol.
Preservative:	Sodium azide
Precaution of Use:	This product contains Sodium azide: a POISONOUS AND HAZARDOUS SUBSTANCE which should be handled by trained staff only.
Storage:	-20 °C
Storage Comment:	Store at -20 °C. Stable for 12 months from date of receipt.
Expiry Date:	12 months



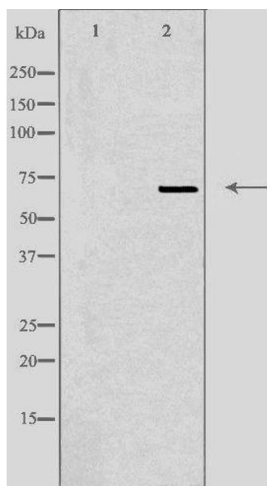
Western Blotting

Image 1. Western blot analysis of extracts from rat brain, using ATG16L2 Antibody.



Immunofluorescence (fixed cells)

Image 2. ABIN6275881 staining HepG2 by IF/ICC. The sample were fixed with PFA and permeabilized in 0.1% Triton X-100, then blocked in 10% serum for 45 minutes at 25°C. The primary antibody was diluted at 1/200 and incubated with the sample for 1 hour at 37°C. An Alexa Fluor 594 conjugated goat anti-rabbit IgG (H+L) Ab, diluted at 1/600, was used as the secondary antibody.



Western Blotting

Image 3. Western blot analysis of extracts from 3T3 cells using ATG16L2 antibody. The lane on the left is treated with the antigen-specific peptide.