

Datasheet for ABIN6259556
anti-GUSBP2 antibody



[Go to Product page](#)

2 Images

Overview

Quantity:	100 µL
Target:	GUSBP2
Reactivity:	Human
Host:	Rabbit
Clonality:	Polyclonal
Conjugate:	This GUSBP2 antibody is un-conjugated
Application:	Western Blotting (WB), ELISA, Immunofluorescence (IF), Immunocytochemistry (ICC)

Product Details

Immunogen:	A synthesized peptide
Isotype:	IgG
Specificity:	GUSBL1 Antibody detects endogenous levels of total GUSBL1
Cross-Reactivity:	Human
Purification:	The antiserum was purified by peptide affinity chromatography using SulfoLink™ Coupling Resin (Thermo Fisher Scientific).

Target Details

Target:	GUSBP2
Alternative Name:	GUSBL1 (GUSBP2 Products)
Background:	Description: Could be the product of a pseudogene. Compared to other members of the

Target Details

glycosyl hydrolase 2 family this putative protein is truncated in both the N- and C-terminal regions and thus probably lacks enzymatic activity.

Gene: GUSBP1

Molecular Weight: 18 kDa

UniProt: [Q15486](#)

Application Details

Application Notes: WB 1:500~1:1000, IF/ICC 1:100-1:500

Restrictions: For Research Use only

Handling

Format: Liquid

Concentration: 1 mg/mL

Buffer: Rabbit IgG in phosphate buffered saline , pH 7.4, 150 mM NaCl, 0.02 % sodium azide and 50 % glycerol.

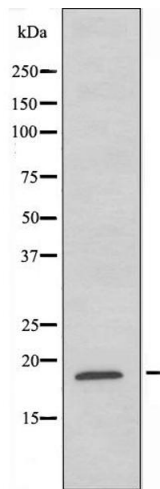
Preservative: Sodium azide

Precaution of Use: This product contains Sodium azide: a POISONOUS AND HAZARDOUS SUBSTANCE which should be handled by trained staff only.

Storage: -20 °C

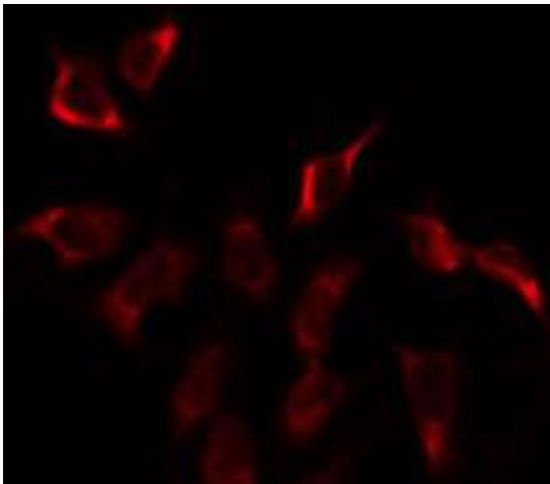
Storage Comment: Store at -20 °C.Stable for 12 months from date of receipt

Expiry Date: 12 months



Western Blotting

Image 1. Western blot analysis of extracts from K562 cells, using GUSBL1 antibody.



Immunofluorescence (fixed cells)

Image 2. ABIN6274915 staining Hela by IF/ICC. The sample were fixed with PFA and permeabilized in 0.1% Triton X-100, then blocked in 10% serum for 45 minutes at 25°C. The primary antibody was diluted at 1/200 and incubated with the sample for 1 hour at 37°C. An Alexa Fluor 594 conjugated goat anti-rabbit IgG (H+L) Ab, diluted at 1/600, was used as the secondary antibody.