



[Go to Product page](#)

Datasheet for ABIN6259561

anti-APOA1BP antibody (Internal Region)

3 Images

Overview

Quantity:	100 µL
Target:	APOA1BP
Binding Specificity:	Internal Region
Reactivity:	Human, Mouse, Rat
Host:	Rabbit
Clonality:	Polyclonal
Conjugate:	This APOA1BP antibody is un-conjugated
Application:	Western Blotting (WB), ELISA, Immunofluorescence (IF), Immunocytochemistry (ICC)

Product Details

Immunogen:	A synthesized peptide derived from human AIBP, corresponding to a region within the internal amino acids.
Isotype:	IgG
Specificity:	AIBP Antibody detects endogenous levels of total AIBP.
Predicted Reactivity:	Pig,Zebrafish,Bovine,Horse,Sheep,Dog,Xenopus
Purification:	The antiserum was purified by peptide affinity chromatography using SulfoLink™ Coupling Resin (Thermo Fisher Scientific).

Target Details

Target:	APOA1BP
---------	---------

Target Details

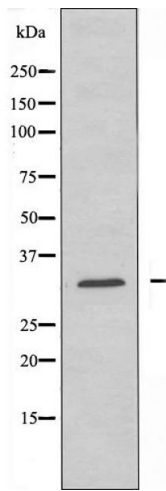
Alternative Name:	NAXE (APOA1BP Products)
Background:	Description: Catalyzes the epimerization of the S- and R-forms of NAD(P)HX, a damaged form of NAD(P)H that is a result of enzymatic or heat-dependent hydration. This is a prerequisite for the S-specific NAD(P)H-hydrate dehydratase to allow the repair of both epimers of NAD(P)HX. Gene: NAXE
Molecular Weight:	30 kDa
Gene ID:	128240
UniProt:	Q8NCW5

Application Details

Application Notes:	WB 1:500-1:1000, IF/ICC 1:100-1:500, ELISA(peptide) 1:20000-1:40000
Restrictions:	For Research Use only

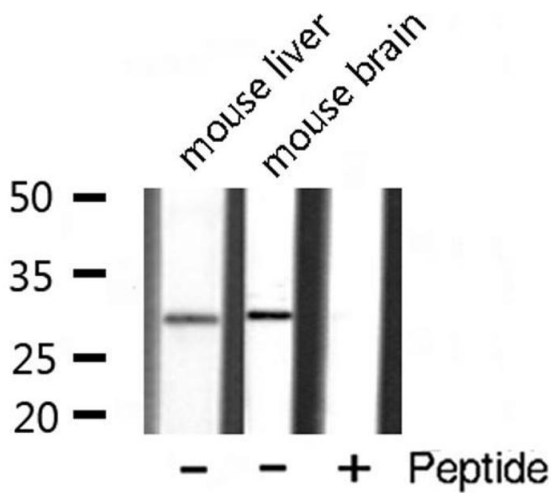
Handling

Format:	Liquid
Concentration:	1 mg/mL
Buffer:	Rabbit IgG in phosphate buffered saline , pH 7.4, 150 mM NaCl, 0.02 % sodium azide and 50 % glycerol.
Preservative:	Sodium azide
Precaution of Use:	This product contains Sodium azide: a POISONOUS AND HAZARDOUS SUBSTANCE which should be handled by trained staff only.
Storage:	-20 °C
Storage Comment:	Store at -20 °C. Stable for 12 months from date of receipt.
Expiry Date:	12 months



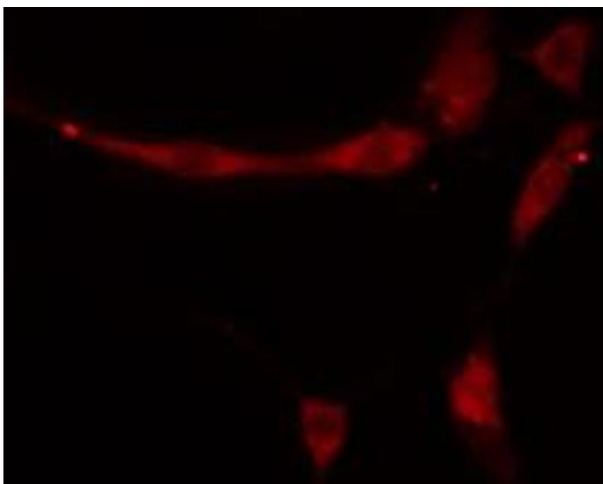
Western Blotting

Image 1. Western blot analysis of extracts from HeLa cells, using AIBP antibody.



Western Blotting

Image 2. Western blot analysis of extracts of various tissue ,using AIBP antibody



Immunofluorescence (fixed cells)

Image 3. ABIN6274852 staining HeLa cells by IF/ICC. The sample were fixed with PFA and permeabilized in 0.1% Triton X-100,then blocked in 10% serum for 45 minutes at 25°C. The primary antibody was diluted at 1/200 and incubated with the sample for 1 hour at 37°C. An Alexa Fluor 594 conjugated goat anti-rabbit IgG (H+L) antibody(Cat.# S0006), diluted at 1/600, was used as secondary antibody.