

Datasheet for ABIN6259576
anti-YOD1 antibody (Internal Region)[Go to Product page](#)

1 Image

Overview

Quantity:	100 µL
Target:	YOD1
Binding Specificity:	Internal Region
Reactivity:	Human
Host:	Rabbit
Clonality:	Polyclonal
Conjugate:	This YOD1 antibody is un-conjugated
Application:	Western Blotting (WB), ELISA, Immunofluorescence (IF), Immunocytochemistry (ICC)

Product Details

Immunogen:	A synthesized peptide derived from human YOD1, corresponding to a region within the internal amino acids.
Isotype:	IgG
Specificity:	YOD1 Antibody detects endogenous levels of total YOD1.
Purification:	The antiserum was purified by peptide affinity chromatography using SulfoLink™ Coupling Resin (Thermo Fisher Scientific).

Target Details

Target:	YOD1
Alternative Name:	YOD1 (YOD1 Products)

Target Details

Background:	<p>Description: Hydrolase that can remove conjugated ubiquitin from proteins and participates in endoplasmic reticulum-associated degradation (ERAD) for misfolded luminal proteins. May act by trimming the ubiquitin chain on the associated substrate to facilitate their threading through the VCP/p97 pore. Ubiquitin moieties on substrates may present a steric impediment to the threading process when the substrate is transferred to the VCP pore and threaded through VCP's axial channel. Mediates deubiquitination of 'Lys-27', 'Lys-29'- and 'Lys-33'-linked polyubiquitin chains. Also able to hydrolyze 'Lys-11'-linked ubiquitin chains. Cleaves both polyubiquitin and di-ubiquitin. May play a role in macroautophagy, regulating for instance the clearance of damaged lysosomes. May recruit PLAA, UBXN6 and VCP to damaged lysosome membranes decorated with K48-linked ubiquitin chains and remove these chains allowing autophagosome formation (PubMed:27753622).</p> <p>Gene: YOD1</p>
Molecular Weight:	35 kDa
Gene ID:	55432
UniProt:	Q5VVQ6
Pathways:	ER-Nucleus Signaling

Application Details

Application Notes:	WB 1:500-1:1000, IF/ICC 1:100-1:500, ELISA(peptide) 1:20000-1:40000
Restrictions:	For Research Use only

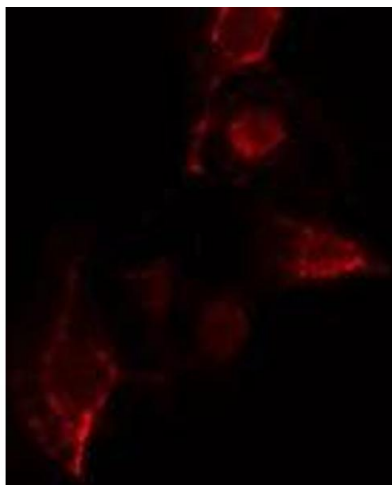
Handling

Format:	Liquid
Concentration:	1 mg/mL
Buffer:	Rabbit IgG in phosphate buffered saline , pH 7.4, 150 mM NaCl, 0.02 % sodium azide and 50 % glycerol.
Preservative:	Sodium azide
Precaution of Use:	This product contains Sodium azide: a POISONOUS AND HAZARDOUS SUBSTANCE which should be handled by trained staff only.
Storage:	-20 °C
Storage Comment:	Store at -20 °C. Stable for 12 months from date of receipt.

Handling

Expiry Date: 12 months

Images



Immunofluorescence (fixed cells)

Image 1. ABIN6275661 staining COLO205 cells by IF/ICC. The sample were fixed with PFA and permeabilized in 0.1% Triton X-100, then blocked in 10% serum for 45 minutes at 25°C. The primary antibody was diluted at 1/200 and incubated with the sample for 1 hour at 37°C. An Alexa Fluor 594 conjugated goat anti-rabbit IgG (H+L) antibody (Cat.# S0006), diluted at 1/600, was used as secondary antibody