

Datasheet for ABIN6259583

anti-GCFC2 antibody**2** Images[Go to Product page](#)

Overview

Quantity:	100 µL
Target:	GCFC2
Reactivity:	Human, Mouse
Host:	Rabbit
Clonality:	Polyclonal
Conjugate:	This GCFC2 antibody is un-conjugated
Application:	Western Blotting (WB), ELISA, Immunofluorescence (IF), Immunocytochemistry (ICC)

Product Details

Immunogen:	A synthesized peptide
Isotype:	IgG
Specificity:	GCF Antibody detects endogenous levels of total GCF
Cross-Reactivity:	Human, Mouse (Murine)
Purification:	The antiserum was purified by peptide affinity chromatography using SulfoLink™ Coupling Resin (Thermo Fisher Scientific).

Target Details

Target:	GCFC2
Alternative Name:	GCF (GCFC2 Products)
Background:	Description: Factor that represses transcription. It binds to the GC-rich sequences (5'-

Target Details

GCGGGGC-3') present in the epidermal growth factor receptor, beta-actin, and calcium-dependent protease promoters. Involved in pre-mRNA splicing through regulating spliceosome C complex formation. May play a role during late-stage splicing events and turnover of excised introns.

Gene: GCFC2

Molecular Weight: 80 kDa

Gene ID: 6936

UniProt: [P16383](#)

Application Details

Application Notes: WB 1:500~1:1000, IF/ICC 1:100-1:500

Restrictions: For Research Use only

Handling

Format: Liquid

Concentration: 1 mg/mL

Buffer: Rabbit IgG in phosphate buffered saline , pH 7.4, 150 mM NaCl, 0.02 % sodium azide and 50 % glycerol.

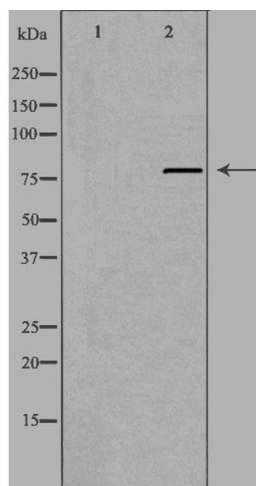
Preservative: Sodium azide

Precaution of Use: This product contains Sodium azide: a POISONOUS AND HAZARDOUS SUBSTANCE which should be handled by trained staff only.

Storage: -20 °C

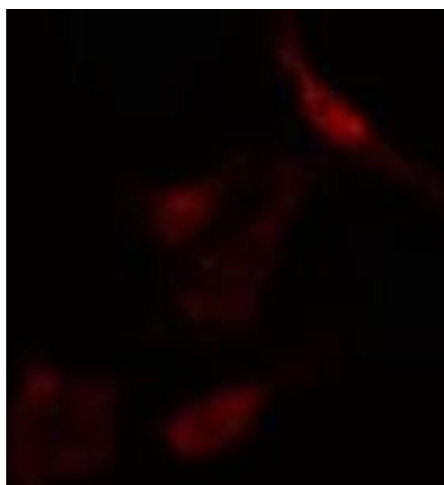
Storage Comment: Store at -20 °C.Stable for 12 months from date of receipt

Expiry Date: 12 months



Western Blotting

Image 1. Western blot analysis of extracts from RAW264.7 cells, using GCF antibody.



Immunofluorescence (fixed cells)

Image 2. ABIN6275151 staining RAW264.7 cells by IF/ICC. The sample were fixed with PFA and permeabilized in 0.1% Triton X-100, then blocked in 10% serum for 45 minutes at 25°C. The primary antibody was diluted at 1/200 and incubated with the sample for 1 hour at 37°C. An Alexa Fluor 594 conjugated goat anti-rabbit IgG (H+L) antibody (Cat.# S0006), diluted at 1/600, was used as secondary antibody