

Datasheet for ABIN6259584

anti-DIRC1 antibody**2** Images[Go to Product page](#)

Overview

Quantity:	100 µL
Target:	DIRC1
Reactivity:	Human, Rat
Host:	Rabbit
Clonality:	Polyclonal
Conjugate:	This DIRC1 antibody is un-conjugated
Application:	ELISA, Immunohistochemistry (IHC), Western Blotting (WB)

Product Details

Immunogen:	A synthesized peptide
Isotype:	IgG
Specificity:	DIRC1 antibody detects endogenous levels of total DIRC1
Cross-Reactivity:	Human, Rat (Rattus)
Purification:	The antiserum was purified by peptide affinity chromatography using SulfoLink™ Coupling Resin (Thermo Fisher Scientific).

Target Details

Target:	DIRC1
Alternative Name:	DIRC1 (DIRC1 Products)
Background:	Gene: DIRC1

Target Details

Gene ID:	116093
UniProt:	Q969H9

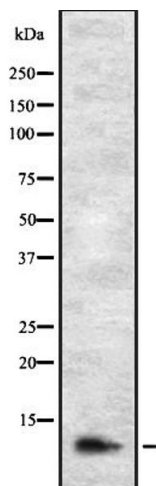
Application Details

Application Notes:	WB 1:500-1:2000 IHC 1:50-1:200
Restrictions:	For Research Use only

Handling

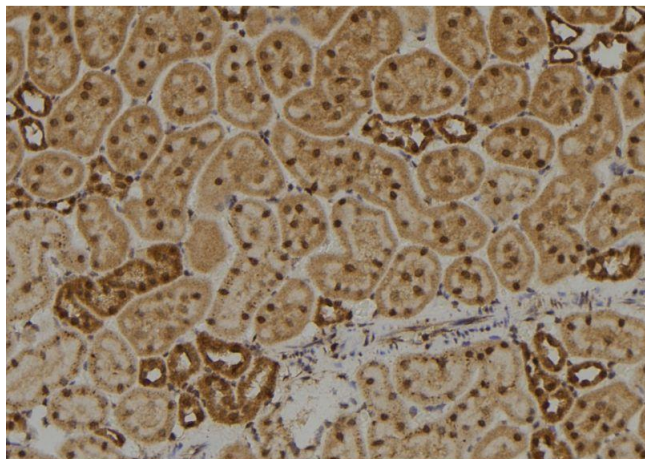
Format:	Liquid
Concentration:	1 mg/mL
Buffer:	Rabbit IgG in phosphate buffered saline, pH 7.4, 150 mM NaCl, 0.02 % sodium azide and 50 % glycerol.
Preservative:	Sodium azide
Precaution of Use:	This product contains Sodium azide: a POISONOUS AND HAZARDOUS SUBSTANCE which should be handled by trained staff only.

Images



Western Blotting

Image 1. Western blot analysis of DIRC1 expression in HEK293 cells. The lane on the left is treated with the antigen-specific peptide.



Immunohistochemistry

Image 2. ABIN6273572 at 1/100 staining Rat kidney tissue by IHC-P. The sample was formaldehyde fixed and a heat mediated antigen retrieval step in citrate buffer was performed. The sample was then blocked and incubated with the antibody for 1.5 hours at 22°C. An HRP conjugated goat anti-rabbit antibody was used as the secondary.