



[Go to Product page](#)

Datasheet for ABIN6259586
anti-HSPA12A antibody (N-Term)

1 Image

Overview

Quantity:	100 µL
Target:	HSPA12A
Binding Specificity:	N-Term
Reactivity:	Human, Mouse
Host:	Rabbit
Clonality:	Polyclonal
Conjugate:	This HSPA12A antibody is un-conjugated
Application:	Western Blotting (WB), ELISA, Immunocytochemistry (ICC), Immunofluorescence (IF)

Product Details

Immunogen:	A synthesized peptide derived from human HSPA12A, corresponding to a region within N-terminal amino acids.
Isotype:	IgG
Specificity:	HSPA12A Antibody detects endogenous levels of total HSPA12A.
Predicted Reactivity:	Pig,Bovine,Horse,Sheep,Rabbit,Dog,Chicken,Xenopus
Purification:	The antiserum was purified by peptide affinity chromatography using SulfoLink™ Coupling Resin (Thermo Fisher Scientific).

Target Details

Target:	HSPA12A
---------	---------

Target Details

Alternative Name: HSPA12A ([HSPA12A Products](#))

Background: Gene: HSPA12A

Molecular Weight: 75 kDa

Gene ID: 259217

UniProt: [O43301](#)

Application Details

Application Notes: WB 1:500-1:2000, IF/ICC 1:100-1:500, ELISA(peptide) 1:20000-1:40000

Restrictions: For Research Use only

Handling

Format: Liquid

Concentration: 1 mg/mL

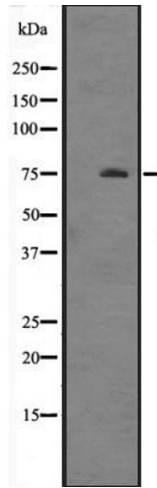
Buffer: Rabbit IgG in phosphate buffered saline, pH 7.4, 150 mM NaCl, 0.02 % sodium azide and 50 % glycerol.

Preservative: Sodium azide

Precaution of Use: This product contains Sodium azide: a POISONOUS AND HAZARDOUS SUBSTANCE which should be handled by trained staff only.

Storage: -20 °C

Expiry Date: 12 months



Western Blotting

Image 1. Western blot analysis of HSPA12A expression in Mouse brain tissue lysate ,The lane on the left is treated with the antigen-specific peptide.