



[Go to Product page](#)

Datasheet for ABIN6259596
anti-SH2D2A antibody (C-Term)

2 Images

Overview

Quantity:	100 µL
Target:	SH2D2A
Binding Specificity:	C-Term
Reactivity:	Human
Host:	Rabbit
Clonality:	Polyclonal
Conjugate:	This SH2D2A antibody is un-conjugated
Application:	Western Blotting (WB), ELISA, Immunofluorescence (IF), Immunocytochemistry (ICC)

Product Details

Immunogen:	A synthesized peptide derived from human SH2D2A, corresponding to a region within C-terminal amino acids.
Isotype:	IgG
Specificity:	SH2D2A Antibody detects endogenous levels of total SH2D2A.
Predicted Reactivity:	Rabbit
Purification:	The antiserum was purified by peptide affinity chromatography using SulfoLink™ Coupling Resin (Thermo Fisher Scientific).

Target Details

Target:	SH2D2A
---------	--------

Target Details

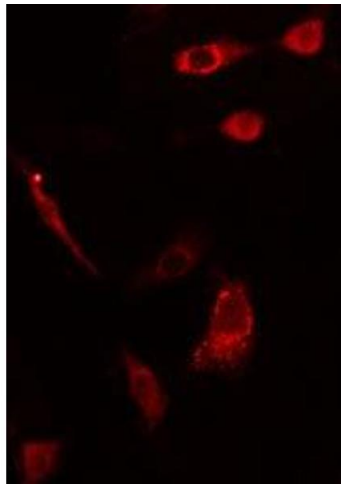
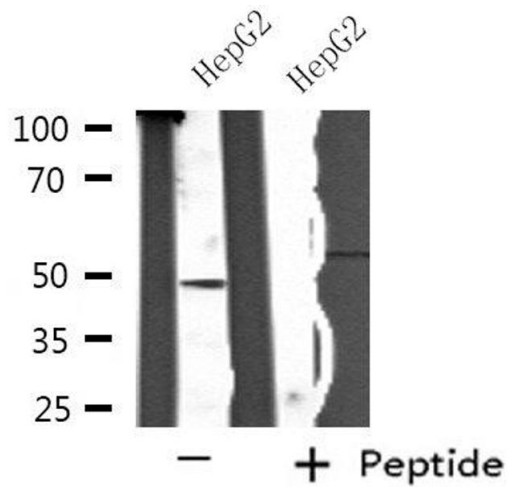
Alternative Name:	SH2D2A (SH2D2A Products)
Background:	<p>Description: Could be a T-cell-specific adapter protein involved in the control of T-cell activation. May play a role in the CD4-p56-LCK-dependent signal transduction pathway. Could also play an important role in normal and pathological angiogenesis. Could be an adapter protein that facilitates and regulates interaction of KDR with effector proteins important to endothelial cell survival and proliferation.</p> <p>Gene: SH2D2A</p>
Molecular Weight:	48 kDa
Gene ID:	9047
UniProt:	Q9NP31
Pathways:	Signaling Events mediated by VEGFR1 and VEGFR2, VEGF Signaling

Application Details

Application Notes:	WB 1:500-1:1000, IF/ICC 1:100-1:500, ELISA(peptide) 1:20000-1:40000
Restrictions:	For Research Use only

Handling

Format:	Liquid
Concentration:	1 mg/mL
Buffer:	Rabbit IgG in phosphate buffered saline , pH 7.4, 150 mM NaCl, 0.02 % sodium azide and 50 % glycerol.
Preservative:	Sodium azide
Precaution of Use:	This product contains Sodium azide: a POISONOUS AND HAZARDOUS SUBSTANCE which should be handled by trained staff only.
Storage:	-20 °C
Storage Comment:	Store at -20 °C. Stable for 12 months from date of receipt.
Expiry Date:	12 months



Western Blotting

Image 1. Western blot analysis of extracts from HepG2 cells, using SH2D2A antibody.

Immunofluorescence (fixed cells)

Image 2. ABIN6275561 staining HepG2 cells by IF/ICC. The sample were fixed with PFA and permeabilized in 0.1% Triton X-100, then blocked in 10% serum for 45 minutes at 25°C. The primary antibody was diluted at 1/200 and incubated with the sample for 1 hour at 37°C. An Alexa Fluor 594 conjugated goat anti-rabbit IgG (H+L) antibody (Cat.# S0006), diluted at 1/600, was used as secondary antibody