

Datasheet for ABIN6259597

anti-EMR4 antibody

2 Images

[Go to Product page](#)

Overview

Quantity:	100 µL
Target:	EMR4
Reactivity:	Human
Host:	Rabbit
Clonality:	Polyclonal
Conjugate:	This EMR4 antibody is un-conjugated
Application:	Western Blotting (WB), ELISA, Immunofluorescence (IF), Immunocytochemistry (ICC)

Product Details

Immunogen:	A synthesized peptide
Isotype:	IgG
Specificity:	EMR4 Antibody detects endogenous levels of total EMR4
Cross-Reactivity:	Human
Purification:	The antiserum was purified by peptide affinity chromatography using SulfoLink™ Coupling Resin (Thermo Fisher Scientific).

Target Details

Target:	EMR4
Alternative Name:	EMR4 (EMR4 Products)
Background:	Description: May mediate the cellular interaction between myeloid cells and B-cells.

Target Details

	Gene: ADGRE4P
Molecular Weight:	55 kDa
UniProt:	Q86SQ3

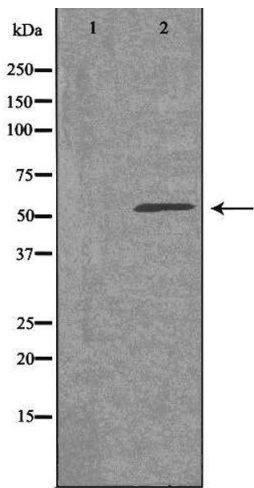
Application Details

Application Notes:	WB 1:500~1:1000, IF/ICC 1:100-1:500
Restrictions:	For Research Use only

Handling

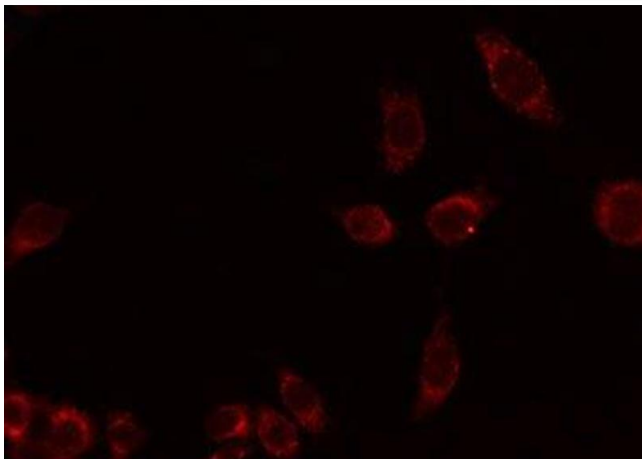
Format:	Liquid
Concentration:	1 mg/mL
Buffer:	Rabbit IgG in phosphate buffered saline , pH 7.4, 150 mM NaCl, 0.02 % sodium azide and 50 % glycerol.
Preservative:	Sodium azide
Precaution of Use:	This product contains Sodium azide: a POISONOUS AND HAZARDOUS SUBSTANCE which should be handled by trained staff only.
Storage:	-20 °C
Storage Comment:	Store at -20 °C.Stable for 12 months from date of receipt
Expiry Date:	12 months

Images



Western Blotting

Image 1. Western blot analysis of extracts from HUVEC cells using EMR4 antibody. The lane on the left is treated with the antigen-specific peptide.



Immunofluorescence (fixed cells)

Image 2. ABIN6275987 staining HuvEc by IF/ICC. The sample were fixed with PFA and permeabilized in 0.1% Triton X-100, then blocked in 10% serum for 45 minutes at 25°C. The primary antibody was diluted at 1/200 and incubated with the sample for 1 hour at 37°C. An Alexa Fluor 594 conjugated goat anti-rabbit IgG (H+L) Ab, diluted at 1/600, was used as the secondary antibody