

Datasheet for ABIN6259603  
**anti-CDKAL1 antibody (N-Term)**

## 5 Images

[Go to Product page](#)

## Overview

Quantity:	100 µL
Target:	CDKAL1
Binding Specificity:	N-Term
Reactivity:	Human, Rat, Mouse
Host:	Rabbit
Clonality:	Polyclonal
Conjugate:	This CDKAL1 antibody is un-conjugated
Application:	ELISA, Western Blotting (WB), Immunofluorescence (IF), Immunocytochemistry (ICC)

## Product Details

Immunogen:	A synthesized peptide derived from human CDKAL, corresponding to a region within N-terminal amino acids.
Isotype:	IgG
Specificity:	CDKAL Antibody detects endogenous levels of total CDKAL.
Predicted Reactivity:	Pig,Bovine,Horse,Sheep,Rabbit,Dog
Purification:	The antiserum was purified by peptide affinity chromatography using SulfoLink™ Coupling Resin (Thermo Fisher Scientific).

## Target Details

Target:	CDKAL1
---------	--------

## Target Details

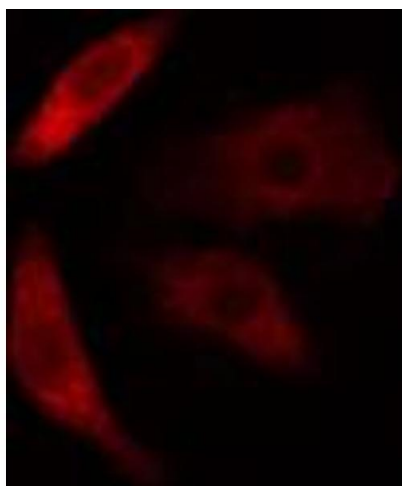
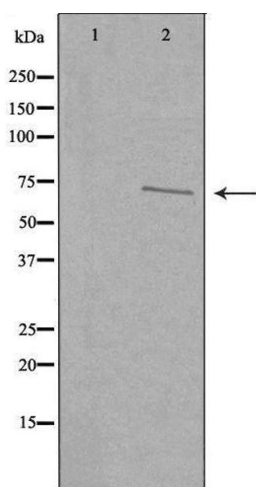
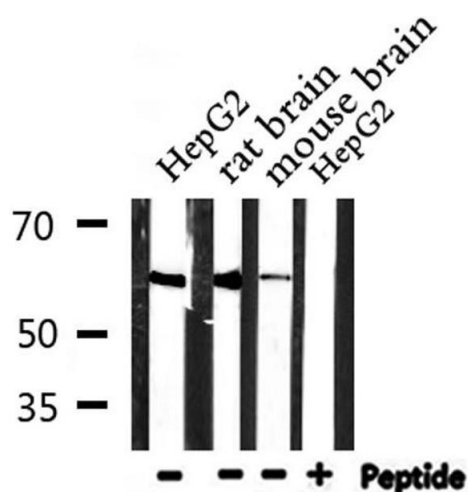
Alternative Name:	CDKAL1 ( <a href="#">CDKAL1 Products</a> )
Background:	Description: Catalyzes the methylthiolation of N6-threonylcarbamoyladenosine (t6A), leading to the formation of 2-methylthio-N6-threonylcarbamoyladenosine (ms2t6A) at position 37 in tRNAs that read codons beginning with adenine.  Gene: CDKAL1
Molecular Weight:	65 kDa
Gene ID:	54901
UniProt:	<a href="#">Q5VV42</a>

## Application Details

Application Notes:	WB 1:500-1:1000, IF/ICC 1:100-1:500, ELISA(peptide) 1:20000-1:40000
Restrictions:	For Research Use only

## Handling

Format:	Liquid
Concentration:	1 mg/mL
Buffer:	Rabbit IgG in phosphate buffered saline , pH 7.4, 150 mM NaCl, 0.02 % sodium azide and 50 % glycerol.
Preservative:	Sodium azide
Precaution of Use:	This product contains Sodium azide: a POISONOUS AND HAZARDOUS SUBSTANCE which should be handled by trained staff only.
Storage:	-20 °C
Storage Comment:	Store at -20 °C. Stable for 12 months from date of receipt.
Expiry Date:	12 months



#### Western Blotting

**Image 1.** Western blot analysis of extracts from HepG2, rat brain, mouse brain, using CDKAL Antibody.

#### Western Blotting

**Image 2.** Western blot analysis of extracts from COLO205 cells, using CDKAL antibody. The lane on the left is treated with the antigen-specific peptide.

#### Immunofluorescence (fixed cells)

**Image 3.** ABIN6274618 staining COLO205 cells by IF/ICC. The sample were fixed with PFA and permeabilized in 0.1% Triton X-100, then blocked in 10% serum for 45 minutes at 25°C. The primary antibody was diluted at 1/200 and incubated with the sample for 1 hour at 37°C. An Alexa Fluor 594 conjugated goat anti-rabbit IgG (H+L) antibody (Cat.# S0006), diluted at 1/600, was used as secondary antibody.

Please check the [product details page](#) for more images. Overall 5 images are available for ABIN6259603.