



[Go to Product page](#)

Datasheet for ABIN6259604

## anti-NSG1 antibody (Internal Region)

### 1 Image

#### Overview

Quantity:	100 µL
Target:	NSG1 (D4S234E)
Binding Specificity:	Internal Region
Reactivity:	Human, Mouse, Rat
Host:	Rabbit
Clonality:	Polyclonal
Conjugate:	This NSG1 antibody is un-conjugated
Application:	Western Blotting (WB), ELISA, Immunofluorescence (IF), Immunocytochemistry (ICC)

#### Product Details

Immunogen:	A synthesized peptide derived from human NSG1, corresponding to a region within the internal amino acids.
Isotype:	IgG
Specificity:	NSG1 Antibody detects endogenous levels of total NSG1.
Predicted Reactivity:	Pig,Bovine,Horse,Sheep,Rabbit,Dog
Purification:	The antiserum was purified by peptide affinity chromatography using SulfoLink™ Coupling Resin (Thermo Fisher Scientific).

#### Target Details

Target:	NSG1 (D4S234E)
---------	----------------

## Target Details

---

Alternative Name:	NSG1 ( <a href="#">D4S234E Products</a> )
Background:	<p>Description: Plays a role in the recycling mechanism in neurons of multiple receptors, including AMPAR, APP and L1CAM and acts at the level of early endosomes to promote sorting of receptors toward a recycling pathway. Regulates sorting and recycling of GRIA2 through interaction with GRIP1 and then contributes to the regulation of synaptic transmission and plasticity by affecting the recycling and targeting of AMPA receptors to the synapse (By similarity). Is required for faithful sorting of L1CAM to axons by facilitating trafficking from somatodendritic early endosome or the recycling endosome (By similarity). In an other hand, induces apoptosis via the activation of CASP3 in response to DNA damage (PubMed:20599942, PubMed:20878061).</p> <p>Gene: NSG1</p>
Molecular Weight:	26 kDa
Gene ID:	27065
UniProt:	<a href="#">P42857</a>

## Application Details

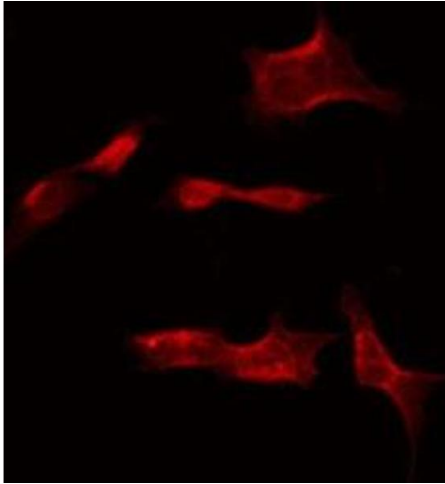
---

Application Notes:	WB 1:500-1:1000, IF/ICC 1:100-1:500, ELISA(peptide) 1:20000-1:40000
Restrictions:	For Research Use only

## Handling

---

Format:	Liquid
Concentration:	1 mg/mL
Buffer:	Rabbit IgG in phosphate buffered saline , pH 7.4, 150 mM NaCl, 0.02 % sodium azide and 50 % glycerol.
Preservative:	Sodium azide
Precaution of Use:	This product contains Sodium azide: a POISONOUS AND HAZARDOUS SUBSTANCE which should be handled by trained staff only.
Storage:	-20 °C
Storage Comment:	Store at -20 °C. Stable for 12 months from date of receipt.
Expiry Date:	12 months



#### Immunofluorescence (fixed cells)

**Image 1.** ABIN6275308 staining COLO205 by IF/ICC. The sample were fixed with PFA and permeabilized in 0.1% Triton X-100, then blocked in 10% serum for 45 minutes at 25°C. The primary antibody was diluted at 1/200 and incubated with the sample for 1 hour at 37°C. An Alexa Fluor 594 conjugated goat anti-rabbit IgG (H+L) Ab, diluted at 1/600, was used as the secondary antibody.